

Chk1 antibody

Cat. No. GTX22845

Host	Goat
Clonality	Polyclonal
Isotype	IgG
Applications	WB, PLA
Reactivity	Human

Package
50 µg

Applications

Application Note

*Optimal dilutions/concentrations should be determined by the researcher.

Suggested dilution	Recommended dilution
WB	1:2500 - 1:15000
PLA	1:1000 - 1:10000

Not tested in other applications.

Calculated MW 54 kDa. ([Note](#))

Properties

Form	Liquid
Buffer	Tris-Citrate/Phosphate
Preservative	0.09% Sodium azide
Storage	Store as concentrated solution. Centrifuge briefly prior to opening vial. Store at 4°C. DO NOT FREEZE.
Concentration	Batch dependent (Please refer to the vial label for the specific concentration.)
Immunogen	The immunogen this antibody was made to, maps to a region between residues 200 and 250 of human Checkpoint Kinase 1 using the numbering given in entry NP_001265.1 (GenelD 1111).
Purification	Purified by antigen-affinity chromatography
Conjugation	Unconjugated

Note

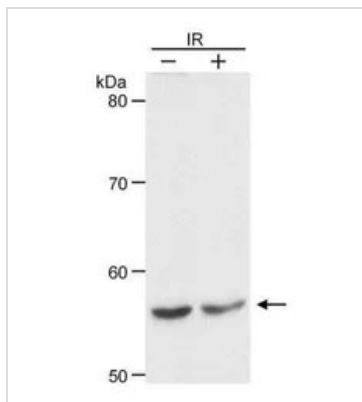
For laboratory research use only. Not for any clinical, therapeutic, or diagnostic use in humans or animals. Not for animal or human consumption.

Purchasers shall not, and agree not to enable third parties to, analyze, copy, reverse engineer or otherwise attempt to determine the structure or sequence of the product.



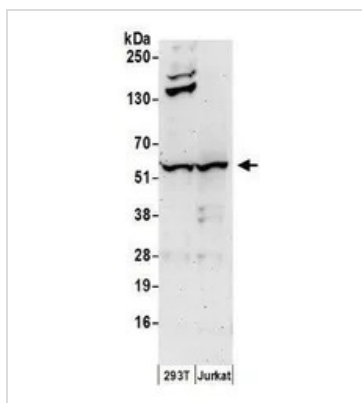
For full product information, images and publications, please visit our [website](#).

DATA IMAGES

**GTX22845 WB Image**

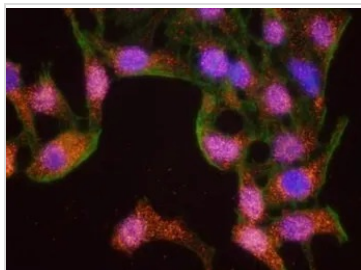
WB analysis of HeLa cells treated with 10 Gy ionizing radiation (IR) or untreated using GTX22845 Chk1 antibody.

Dilution : 0.1 µg/ml

**GTX22845 WB Image**

WB analysis of Jurkat and 293T cell lysate (in NETN lysis buffer) using GTX22845 Chk1 antibody.

Dilution : 0.4 µg/ml

**GTX22845 PLA Image**

PLA analysis of HeLa cells using GTX22845 Chk1 antibody and anti-human PCNA antibody.

Green : Actin

Red : positive signal

Blue : DAPI



For full product information, images and publications, please visit our [website](#).