

LAT antibody [LAT-01]

Cat. No. GTX22852

Host	Mouse
Clonality	Monoclonal
Isotype	IgG1
Applications	WB, FCM, IP
Reactivity	Human

Package
100 µg

Applications

Application Note

*Optimal dilutions/concentrations should be determined by the researcher.

Suggested dilution	Recommended dilution
WB	Assay dependent
FCM	Assay dependent
IP	Assay dependent

Not tested in other applications.

Calculated MW	28 kDa. (Note)
Product Note	We do not recommend use of this product for Mouse samples.

Properties

Form	Liquid
Buffer	PBS
Preservative	15mM Sodium azide
Storage	Store as concentrated solution. Centrifuge briefly prior to opening vial. Store at 4°C. DO NOT FREEZE.
Concentration	1 mg/ml (Please refer to the vial label for the specific concentration.)
Immunogen	Bacterially produced recombinant polypeptide corresponding to the entire cytoplasmic domain of human LAT.
Purification	Protein A purified
Conjugation	Unconjugated

Note

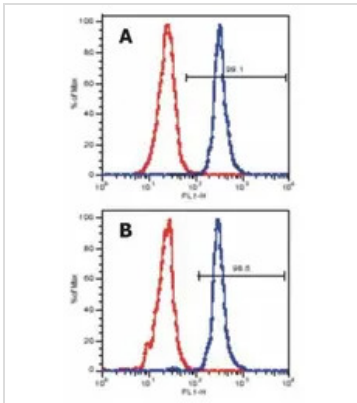
For laboratory research use only. Not for any clinical, therapeutic, or diagnostic use in humans or animals. Not for animal or human consumption.

Purchasers shall not, and agree not to enable third parties to, analyze, copy, reverse engineer or otherwise attempt to determine the structure or sequence of the product.



For full product information, images and publications, please visit our [website](#).

DATA IMAGES



GTx22852 FCM Image

Flow Cytometry analysis of LAT expression in peripheral blood lymphocytes using anti-human LAT (GTx22852) (surface markers were stained prior to intracellular staining of human LAT).

Panel A: gate on CD4+ cells

Panel B: gate on CD8+ cells



For full product information, images and publications, please visit our [website](https://www.genetex.com).