

## Calmodulin antibody [2D1]

**Cat. No. GTX22860**

<b>Host</b>	Mouse
<b>Clonality</b>	Monoclonal
<b>Isotype</b>	IgG1
<b>Applications</b>	WB, ICC/IF, IHC-P, IHC-Fr, FCM, ELISA, IHC, Neutralizing /Inhibition
<b>Reactivity</b>	Human, Mouse, Rat, Bovine, Chicken, Fungi, Shrew, Bacteria

References ( 2 )

Package

200 µl

## Applications

**Application Note**

\*Optimal dilutions/concentrations should be determined by the researcher.

Suggested dilution	Recommended dilution
WB	1:500
ICC/IF	1:50
IHC-P	Assay dependent
IHC-Fr	1:20
FCM	2µg per 10 <sup>6</sup> cells
ELISA	Assay dependent
IHC	Assay dependent
Neutralizing /Inhibition	Assay dependent

**Note : Permeabilization : 90% methanol for 10 min at room temperature**

Not tested in other applications.

**Product Note**

This antibody does not detect parvalbumin, tropinin, S-100, or myosin light chain kinase (MLCK). Addition of EGTA to buffers completely inhibits antibody staining.

## Properties

<b>Form</b>	Liquid
<b>Buffer</b>	PBS
<b>Preservative</b>	0.05% Sodium azide
<b>Storage</b>	Store as concentrated solution. Centrifuge briefly prior to opening vial. For short-term storage (1-2 weeks), store at 4°C. For long-term storage, aliquot and store at -20°C or below. Avoid multiple freeze-thaw cycles.
<b>Concentration</b>	1 mg/ml (Please refer to the vial label for the specific concentration.)
<b>Immunogen</b>	Calmodulin purified from Dictyostelium discoideum.



For full product information, images and publications, please visit our [website](#).

**Purification** Protein A purified

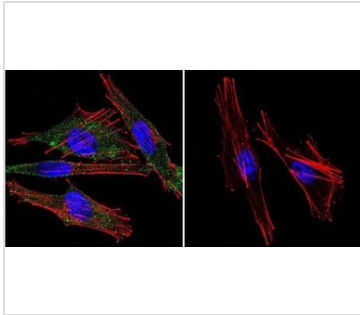
**Conjugation** Unconjugated

**Note**

For laboratory research use only. Not for any clinical, therapeutic, or diagnostic use in humans or animals. Not for animal or human consumption.

Purchasers shall not, and agree not to enable third parties to, analyze, copy, reverse engineer or otherwise attempt to determine the structure or sequence of the product.

DATA IMAGES



**GTX22860 ICC/IF Image**

ICC/IF analysis of A2058 Cells using GTX22860 Calmodulin antibody [2D1]. Cells were probed without (right) or with(left) an antibody.

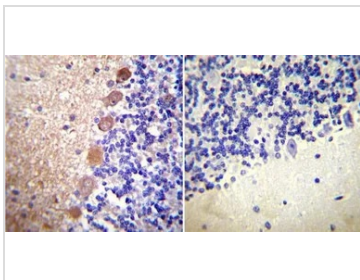
Green : Primary antibody

Blue : Nuclei

Red : Actin

Fixation : formaldehyde

Dilution : 1:20 overnight at 4°C



**GTX22860 IHC-P Image**

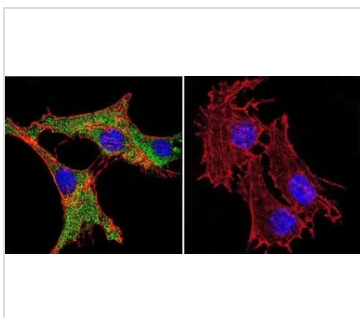
IHC-P analysis of rat cerebellum tissue using GTX22860 Calmodulin antibody [2D1].

Left : Primary antibody

Right : Negative control without primary antibody

Antigen retrieval : heat induced antigen retrieval was performed using 10mM sodium citrate (pH6.0) buffer, microwaved for 8-15 minutes

Dilution : 1:20



**GTX22860 ICC/IF Image**

ICC/IF analysis of C6 cells using GTX22860 Calmodulin antibody [2D1]. Cells were probed without (right) or with(left) an antibody.

Green : Primary antibody

Blue : Nuclei

Red : Actin

Fixation : formaldehyde

Dilution : 1:20 overnight at 4°C



For full product information, images and publications, please visit our [website](#).