

SERCA2 ATPase antibody [2A7-A1]

Cat. No. GTX22861

Host	Mouse
Clonality	Monoclonal
Isotype	IgG2a
Application	WB, ICC/IF, IHC-P, IHC-Fr, FACS, IP
Reactivity	Human, Mouse, Rat, Rabbit, Sheep, Drosophila, Dog, Guinea pig, Pig, Amphibians, Xenopus, Rodent

Reference (1)
 Package
 100 µl

APPLICATION

Application Note

*Optimal dilutions/concentrations should be determined by the researcher.

Suggested dilution	Recommended dilution
WB	1:1,000
ICC/IF	1:100-1:250
IHC-P	1 µg/ml
IHC-Fr	1:100
FACS	1:20
IP	Assay dependent

Not tested in other applications.

Calculated MW 110 kDa. ([Note](#))

Product Note This antibody recognizes the SERCA2a and SERCA2b isoforms identically. However, the antibody does not recognize the skeletal muscle (SERCA1) or housekeeping isoforms (SERCA3).

PROPERTIES

Form	Liquid
Buffer	Ascites
Preservative	0.05% Sodium azide
Storage	Store as concentrated solution. Centrifuge briefly prior to opening vial. For short-term storage (1-2 weeks), store at 4°C. For long-term storage, aliquot and store at -20°C or below. Avoid multiple freeze-thaw cycles.
Immunogen	Purified canine cardiac sarcoplasmic reticulum vesicles.
Purification	Unpurified
Conjugation	Unconjugated

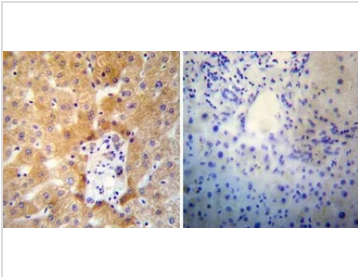


For full product information, images and publications, please visit our [website](#).

For laboratory research use only. Not for any clinical, therapeutic, or diagnostic use in humans or animals. Not for animal or human consumption.

Note

Purchasers shall not, and agree not to enable third parties to, analyze, copy, reverse engineer or otherwise attempt to determine the structure or sequence of the product.

DATA IMAGES

GTX22861 IHC-P Image

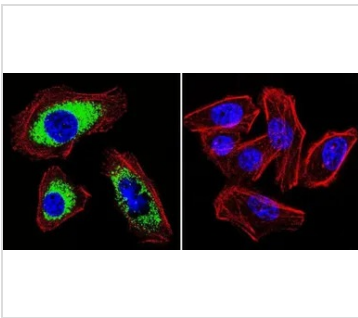
IHC-P analysis of human liver tissue using GTX22861 SERCA2 ATPase antibody [2A7-A1].

Left : Primary antibody

Right : Negative control without primary antibody

Antigen retrieval : heat induced antigen retrieval was performed using 10mM sodium citrate (pH6.0) buffer, microwaved for 8-15 minutes

Dilution : 1:100


GTX22861 ICC/IF Image

ICC/IF analysis of A549 cells using GTX22861 SERCA2 ATPase antibody [2A7-A1]. Cells were probed without (right) or with(left) an antibody.

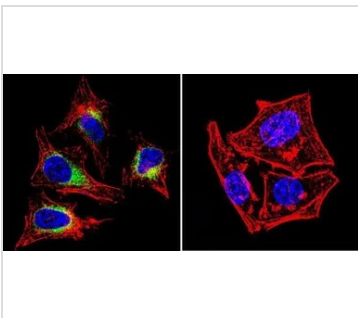
Green : Primary antibody

Blue : Nuclei

Red : Actin

Fixation : formaldehyde

Dilution : 1:200 overnight at 4°C


GTX22861 ICC/IF Image

ICC/IF analysis of HeLa cells using GTX22861 SERCA2 ATPase antibody [2A7-A1]. Cells were probed without (right) or with(left) an antibody.

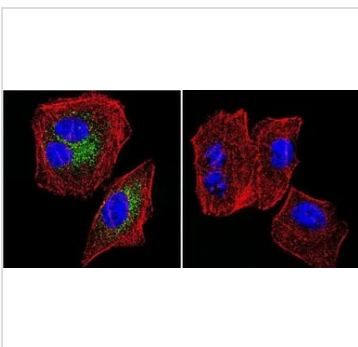
Green : Primary antibody

Blue : Nuclei

Red : Actin

Fixation : formaldehyde

Dilution : 1:200 overnight at 4°C


GTX22861 ICC/IF Image

ICC/IF analysis of U251 cells using GTX22861 SERCA2 ATPase antibody [2A7-A1]. Cells were probed without (right) or with(left) an antibody.

Green : Primary antibody

Blue : Nuclei

Red : Actin

Fixation : formaldehyde

Dilution : 1:200 overnight at 4°C



For full product information, images and publications, please visit our [website](https://www.genetex.com).