

Hydrogen Potassium ATPase Beta antibody [2G11]

Cat. No. GTX22866

Host	Mouse
Clonality	Monoclonal
Isotype	IgG1
Application	WB, ICC/IF, IHC-P, IHC-Fr, FACS, IP, ChIP assay
Reactivity	Human, Mouse, Rat, Rabbit, Bovine, Dog, Guinea pig, Pig, Mustelid, Rodent

Reference (1)
Package
100 µl

APPLICATION

Application Note

*Optimal dilutions/concentrations should be determined by the researcher.

Suggested dilution	Recommended dilution
WB	1:4,000
ICC/IF	1:2,000
IHC-P	1:2000
IHC-Fr	1:2000
FACS	1/50
IP	Assay dependent
ChIP assay	Assay dependent

Not tested in other applications.

Calculated MW 33 kDa. ([Note](#))

Product Note

This antibody has been shown to inhibit the enzymatic activity of the hydrogen/potassium ATPase and to alter the affinity of the cytoplasmic potassium binding site. And it recognizes an epitope between amino acid residues 1-13 or 15-28 located on the cytoplasmic side of the beta-subunit.

PROPERTIES

Form	Liquid
Buffer	Ascites diluted with PBS
Preservative	0.05% Sodium azide
Storage	Store as concentrated solution. Centrifuge briefly prior to opening vial. For short-term storage (1-2 weeks), store at 4°C. For long-term storage, aliquot and store at -20°C or below. Avoid multiple freeze-thaw cycles.
Immunogen	Purified 34 kDa core peptide from deglycosylated hog gastric microsomes.
Purification	Unpurified



For full product information, images and publications, please visit our [website](#).

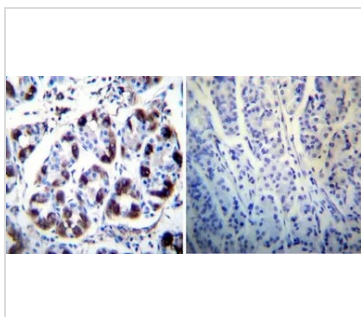
Conjugation

Unconjugated

Note

For laboratory research use only. Not for any clinical, therapeutic, or diagnostic use in humans or animals. Not for animal or human consumption.

Purchasers shall not, and agree not to enable third parties to, analyze, copy, reverse engineer or otherwise attempt to determine the structure or sequence of the product.

DATA IMAGES

GTX22866 IHC-P Image

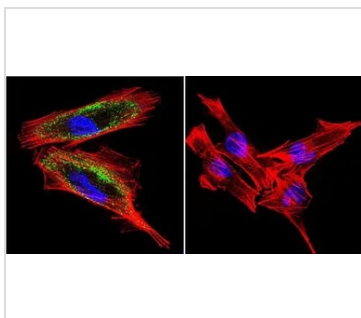
IHC-P analysis of human stomach tissue using GTX22866 Hydrogen Potassium ATPase Beta antibody [2G11].

Left : Primary antibody

Right : Negative control without primary antibody

Antigen retrieval : heat induced antigen retrieval was performed using 10mM sodium citrate (pH6.0) buffer, microwaved for 8-15 minutes

Dilution : 1:200


GTX22866 ICC/IF Image

ICC/IF analysis of A2058 Cells using GTX22866 Hydrogen Potassium ATPase Beta antibody [2G11]. Cells were probed without (right) or with(left) an antibody.

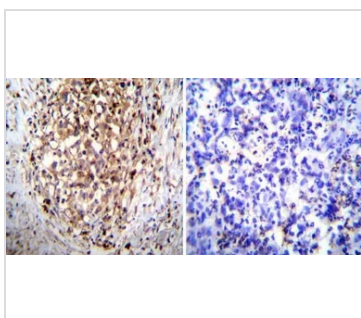
Green : Primary antibody

Blue : Nuclei

Red : Actin

Fixation : formaldehyde

Dilution : 1:100 overnight at 4 °C


GTX22866 IHC-P Image

IHC-P analysis of human gastric carcinoma tissue using GTX22866 Hydrogen Potassium ATPase Beta antibody [2G11].

Left : Primary antibody

Right : Negative control without primary antibody

Antigen retrieval : heat induced antigen retrieval was performed using 10mM sodium citrate (pH6.0) buffer, microwaved for 8-15 minutes

Dilution : 1:200



For full product information, images and publications, please visit our [website](#).