

Ryanodine Receptor antibody [34C]

Cat. No. GTX22868

Host	Mouse
Clonality	Monoclonal
Isotype	IgG1
Applications	WB, ICC/IF, IHC-P, IHC-Fr, IP, IHC (Free Floating)
Reactivity	Human, Mouse, Rat, Rabbit, Sheep, Bovine, Dog, Chicken, Pig, Amphibians, Mustelid, Fish, Primate

References (4)

Package

100 µl

Applications

Application Note

*Optimal dilutions/concentrations should be determined by the researcher.

Suggested dilution	Recommended dilution
WB	1:5,000
ICC/IF	Assay dependent
IHC-P	Assay dependent
IHC-Fr	1:1,000
IP	Assay dependent
IHC (Free Floating)	Assay dependent

Not tested in other applications.

Calculated MW 565 kDa. ([Note](#))

Product Note

This antibody detects ryanodine receptor (RyR)-1 and RyR-2 isoforms. In chickens this antibody detects the alpha, beta and cardiac isoforms. This antibody also detects RyR-3 in mouse cells. In frog, it detects the alpha and beta isoforms and in fish it detects the alpha isoform.

Properties

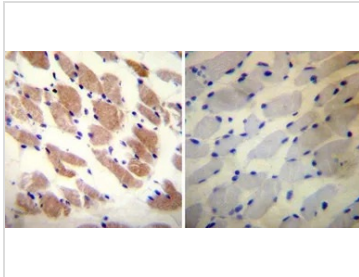
Form	Liquid
Buffer	PBS
Preservative	0.05% Sodium azide
Storage	Store as concentrated solution. Centrifuge briefly prior to opening vial. For short-term storage (1-2 weeks), store at 4°C. For long-term storage, aliquot and store at -20°C or below. Avoid multiple freeze-thaw cycles.
Concentration	1 mg/ml (Please refer to the vial label for the specific concentration.)
Immunogen	Partially purified chicken pectoral muscle ryanodine receptor.



For full product information, images and publications, please visit our [website](#).

Purification	Protein A purified
Conjugation	Unconjugated
Note	<p>For laboratory research use only. Not for any clinical, therapeutic, or diagnostic use in humans or animals. Not for animal or human consumption.</p> <p>Purchasers shall not, and agree not to enable third parties to, analyze, copy, reverse engineer or otherwise attempt to determine the structure or sequence of the product.</p>

DATA IMAGES



GTx22868 IHC-P Image

IHC-P analysis of human skeletal muscle tissue using GTx22868 Ryanodine Receptor antibody [34C].

Left : Primary antibody

Right : Negative control without primary antibody

Antigen retrieval : heat induced antigen retrieval was performed using 10mM sodium citrate (pH6.0) buffer, microwaved for 8-15 minutes

Dilution : 1:20



For full product information, images and publications, please visit our [website](#).