

# NCX1 antibody [C2C12]

**Cat. No. GTX22869**

<b>Host</b>	Mouse
<b>Clonality</b>	Monoclonal
<b>Isotype</b>	IgM
<b>Applications</b>	WB, ICC/IF, IHC-P, IHC-Fr, IP
<b>Reactivity</b>	Human, Mouse, Rat, Rabbit, Bovine, Dog, Guinea pig, Pig, Marsupials, Rodent

References ( 1 )  
Package  
100 µl

## Applications

### Application Note

\*Optimal dilutions/concentrations should be determined by the researcher.

Suggested dilution	Recommended dilution
WB	1:1,000
ICC/IF	1:200
IHC-P	1:100
IHC-Fr	Assay dependent
IP	Assay dependent

Not tested in other applications.

**Calculated MW** 108 kDa. ( [Note](#) )

**Product Note** This antibody recognizes an epitope between amino acids 371-525, which is on the intracellular side of the plasma membrane.

## Properties

<b>Form</b>	Liquid
<b>Buffer</b>	Ascites
<b>Preservative</b>	0.05% Sodium azide
<b>Storage</b>	Store as concentrated solution. Centrifuge briefly prior to opening vial. For short-term storage (1-2 weeks), store at 4°C. For long-term storage, aliquot and store at -20°C or below. Avoid multiple freeze-thaw cycles.
<b>Immunogen</b>	Purified canine cardiac sodium/calcium exchanger.
<b>Purification</b>	Unpurified
<b>Conjugation</b>	Unconjugated



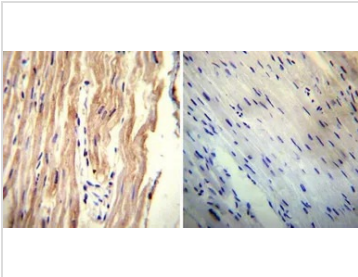
For full product information, images and publications, please visit our [website](#).

For laboratory research use only. Not for any clinical, therapeutic, or diagnostic use in humans or animals. Not for animal or human consumption.

**Note**

Purchasers shall not, and agree not to enable third parties to, analyze, copy, reverse engineer or otherwise attempt to determine the structure or sequence of the product.

#### DATA IMAGES



##### **GTX22869 IHC-P Image**

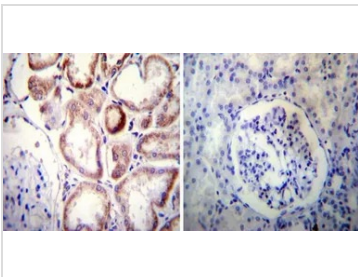
IHC-P analysis of human heart tissue using GTX22869 NCX1 antibody [C2C12].

Left : Primary antibody

Right : Negative control without primary antibody

Antigen retrieval : heat induced antigen retrieval was performed using 10mM sodium citrate (pH6.0) buffer, microwaved for 8-15 minutes

Dilution : 1:20



##### **GTX22869 IHC-P Image**

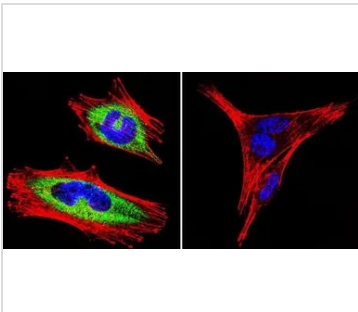
IHC-P analysis of human kidney tissue using GTX22869 NCX1 antibody [C2C12].

Left : Primary antibody

Right : Negative control without primary antibody

Antigen retrieval : heat induced antigen retrieval was performed using 10mM sodium citrate (pH6.0) buffer, microwaved for 8-15 minutes

Dilution : 1:50



##### **GTX22869 ICC/IF Image**

ICC/IF analysis of A2058 Cells using GTX22869 NCX1 antibody [C2C12]. Cells were probed without (right) or with (left) an antibody.

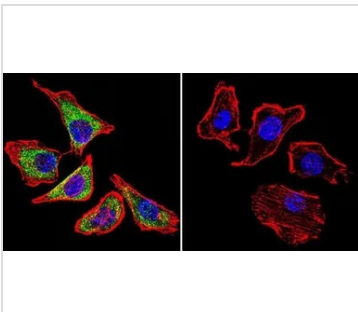
Green : Primary antibody

Blue : Nuclei

Red : Actin

Fixation : formaldehyde

Dilution : 1:100 overnight at 4 °C



##### **GTX22869 ICC/IF Image**

ICC/IF analysis of U251 cells using GTX22869 NCX1 antibody [C2C12]. Cells were probed without (right) or with (left) an antibody.

Green : Primary antibody

Blue : Nuclei

Red : Actin

Fixation : formaldehyde

Dilution : 1:100 overnight at 4 °C



For full product information, images and publications, please visit our [website](http://www.genetex.com).