

NCX1 antibody [C2C12]

Cat. No. GTX22869

Host	Mouse
Clonality	Monoclonal
Isotype	IgM
Applications	WB, ICC/IF, IHC-P, IHC-Fr, IP
Reactivity	Human, Mouse, Rat, Rabbit, Bovine, Dog, Guinea pig, Pig, Marsupials, Rodent

References (1)

Package

100 µl

Applications

Application Note

*Optimal dilutions/concentrations should be determined by the researcher.

Suggested dilution	Recommended dilution
WB	1:1,000
ICC/IF	1:200
IHC-P	1:100
IHC-Fr	Assay dependent
IP	Assay dependent

Not tested in other applications.

Calculated MW 108 kDa. ([Note](#))

Product Note This antibody recognizes an epitope between amino acids 371-525, which is on the intracellular side of the plasma membrane.

Properties

Form	Liquid
Buffer	Ascites
Preservative	0.05% Sodium azide
Storage	Store as concentrated solution. Centrifuge briefly prior to opening vial. For short-term storage (1-2 weeks), store at 4°C. For long-term storage, aliquot and store at -20°C or below. Avoid multiple freeze-thaw cycles.
Immunogen	Purified canine cardiac sodium/calcium exchanger.
Purification	Unpurified
Conjugation	Unconjugated

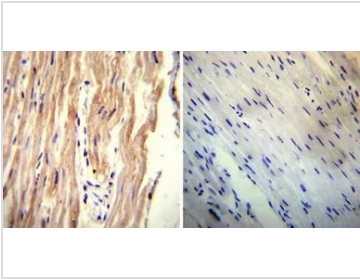


For full product information, images and publications, please visit our [website](#).

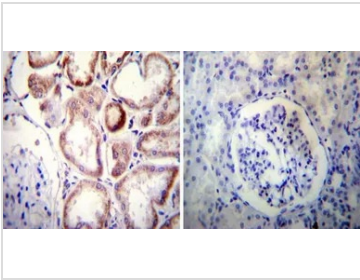
For laboratory research use only. Not for any clinical, therapeutic, or diagnostic use in humans or animals. Not for animal or human consumption.

Note
 Purchasers shall not, and agree not to enable third parties to, analyze, copy, reverse engineer or otherwise attempt to determine the structure or sequence of the product.

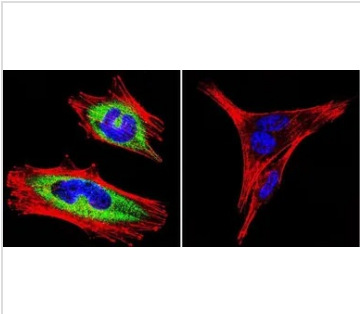
DATA IMAGES



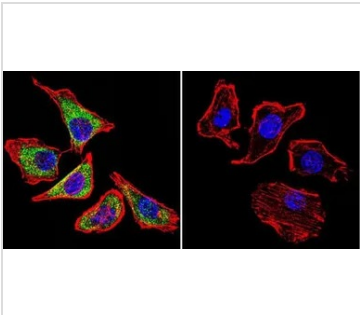
GTX22869 IHC-P Image
 IHC-P analysis of human heart tissue using GTX22869 NCX1 antibody [C2C12].
 Left : Primary antibody
 Right : Negative control without primary antibody
 Antigen retrieval : heat induced antigen retrieval was performed using 10mM sodium citrate (pH6.0) buffer, microwaved for 8-15 minutes
 Dilution : 1:20




GTX22869 IHC-P Image
 IHC-P analysis of human kidney tissue using GTX22869 NCX1 antibody [C2C12].
 Left : Primary antibody
 Right : Negative control without primary antibody
 Antigen retrieval : heat induced antigen retrieval was performed using 10mM sodium citrate (pH6.0) buffer, microwaved for 8-15 minutes
 Dilution : 1:50



GTX22869 ICC/IF Image
 ICC/IF analysis of A2058 Cells using GTX22869 NCX1 antibody [C2C12]. Cells were probed without (right) or with (left) an antibody.
 Green : Primary antibody
 Blue : Nuclei
 Red : Actin
 Fixation : formaldehyde
 Dilution : 1:100 overnight at 4 °C



GTX22869 ICC/IF Image
 ICC/IF analysis of U251 cells using GTX22869 NCX1 antibody [C2C12]. Cells were probed without (right) or with (left) an antibody.
 Green : Primary antibody
 Blue : Nuclei
 Red : Actin
 Fixation : formaldehyde
 Dilution : 1:100 overnight at 4 °C



For full product information, images and publications, please visit our [website](#).