

Triadin antibody [GE 4.90]

Cat. No. GTX22870

Host	Mouse
Clonality	Monoclonal
Isotype	IgG
Applications	WB, IHC-Fr, IP, ELISA, Neutralizing /Inhibition
Reactivity	Mouse, Rat, Rabbit, Pig

Package
100 µl

Applications

Application Note

*Optimal dilutions/concentrations should be determined by the researcher.

Suggested dilution	Recommended dilution
WB	1:500
IHC-Fr	1:50
IP	Assay dependent
ELISA	Assay dependent
Neutralizing /Inhibition	Assay dependent

Not tested in other applications.

Calculated MW 79 kDa. ([Note](#))

Properties

Form	Liquid
Buffer	Ascites
Preservative	0.05% Sodium azide
Storage	Store as concentrated solution. Centrifuge briefly prior to opening vial. For short-term storage (1-2 weeks), store at 4°C. For long-term storage, aliquot and store at -20°C or below. Avoid multiple freeze-thaw cycles.
Immunogen	Purified rabbit fast skeletal muscle triadin.
Purification	Unpurified
Conjugation	Unconjugated

Note

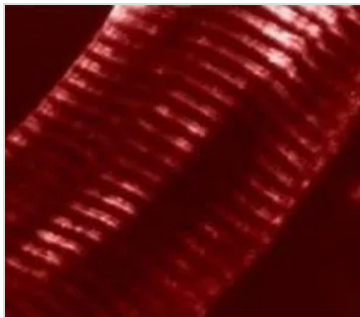
For laboratory research use only. Not for any clinical, therapeutic, or diagnostic use in humans or animals. Not for animal or human consumption.

Purchasers shall not, and agree not to enable third parties to, analyze, copy, reverse engineer or otherwise attempt to determine the structure or sequence of the product.



For full product information, images and publications, please visit our [website](#).

DATA IMAGES

**GTX22870 IHC-Fr Image**

IHC-Fr analysis of mouse breast muscle tissue using GTX22870 Triadin antibody [GE 4.90].



For full product information, images and publications, please visit our [website](#).