

## Sodium/Potassium ATPase alpha 1 antibody [M7-PB-E9]

Cat. No. GTX22871

Host	Mouse
Clonality	Monoclonal
Isotype	IgG1
Applications	WB, ICC/IF, IHC-P, FCM, IP, ELISA, IHC
Reactivity	Human, Mouse, Rat, Sheep, Bovine, Dog, Chicken, Pig

References ( 1 )

Package

200 µl

## Applications

## Application Note

\*Optimal dilutions/concentrations should be determined by the researcher.

Suggested dilution	Recommended dilution
WB	1:500-1:5000
ICC/IF	1:20
IHC-P	1:100
FCM	Assay dependent
IP	Assay dependent
ELISA	Assay dependent
IHC	Assay dependent

Not tested in other applications.

**Calculated MW** 113 kDa. ( [Note](#) )

## Product Note

This antibody recognizes an epitope between amino acid residues 646 and 652 of the sheep kidney alpha sodium/potassium ATPase. In rat, this antibody can only detect the alpha 3 isoform.

## Properties

Form	Liquid
Buffer	Buffer, 0.1% BSA
Preservative	0.05% Sodium azide
Storage	Store as concentrated solution. Centrifuge briefly prior to opening vial. For short-term storage (1-2 weeks), store at 4°C. For long-term storage, aliquot and store at -20°C or below. Avoid multiple freeze-thaw cycles.
Concentration	Batch dependent (Please refer to the vial label for the specific concentration.)
Immunogen	Purified alpha sodium/potassium ATPase from sheep kidney.
Purification	Protein A purified



For full product information, images and publications, please visit our [website](#).

## Conjugation

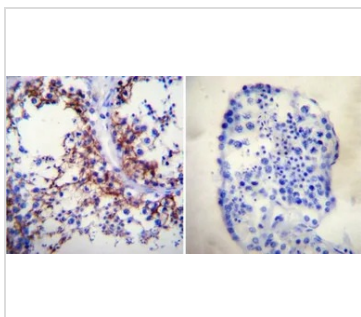
Unconjugated

## Note

For laboratory research use only. Not for any clinical, therapeutic, or diagnostic use in humans or animals. Not for animal or human consumption.

Purchasers shall not, and agree not to enable third parties to, analyze, copy, reverse engineer or otherwise attempt to determine the structure or sequence of the product.

## DATA IMAGES



### GTx22871 IHC-P Image

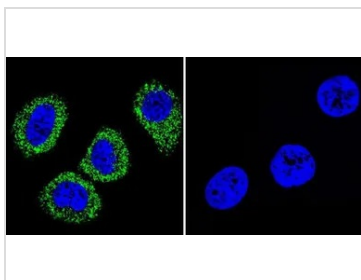
IHC-P analysis of human testis tissue using GTx22871 Sodium/Potassium ATPase alpha 1 antibody [M7-PB-E9].

Left : Primary antibody

Right : Negative control without primary antibody

Antigen retrieval : heat induced antigen retrieval was performed using 10mM sodium citrate (pH6.0) buffer, microwaved for 8-15 minutes

Dilution : 1:200



### GTx22871 ICC/IF Image

ICC/IF analysis of MCF-7 cells using GTx22871 Sodium/Potassium ATPase alpha 1 antibody [M7-PB-E9].

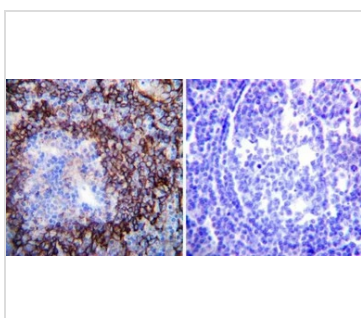
Cells were probed without (right) or with(left) an antibody.

Green : Primary antibody

Blue : Nuclei

Fixation : formaldehyde

Dilution : 1:20 overnight at 4°C



### GTx22871 IHC-P Image

IHC-P analysis of human tonsil tissue using GTx22871 Sodium/Potassium ATPase alpha 1 antibody [M7-PB-E9].

Left : Primary antibody

Right : Negative control without primary antibody

Antigen retrieval : heat induced antigen retrieval was performed using 10mM sodium citrate (pH6.0) buffer, microwaved for 8-15 minutes

Dilution : 1:200



For full product information, images and publications, please visit our [website](https://www.genetex.com).