

## Sodium/Potassium ATPase alpha 1 antibody [M8-P1-A3]

Cat. No. GTX22872

<b>Host</b>	Mouse
<b>Clonality</b>	Monoclonal
<b>Isotype</b>	IgG1
<b>Applications</b>	WB, ICC/IF, IHC-P, IHC-Fr, FCM, Neutralizing/Inhibition
<b>Reactivity</b>	Human, Mouse, Rat, Yeast, Sheep, Dog, Pig, Primate

References ( 1 )

Package

100 µg

## Applications

## Application Note

\*Optimal dilutions/concentrations should be determined by the researcher.

Suggested dilution	Recommended dilution
WB	1:200-1:2000
ICC/IF	1/50 - 1/200
IHC-P	1/100 - 1/2000
IHC-Fr	1:100
FCM	1/20 - 1/100
Neutralizing/Inhibition	Assay dependent

Not tested in other applications.

**Calculated MW** 113 kDa. ( [Note](#) )**Product Note** This antibody recognizes an epitope between amino acid residues 496-506 of lamb kidney sodium/potassium ATPase.

## Properties

<b>Form</b>	Liquid
<b>Buffer</b>	PBS, 0.1% BSA
<b>Preservative</b>	0.05% Sodium azide
<b>Storage</b>	Store as concentrated solution. Centrifuge briefly prior to opening vial. For short-term storage (1-2 weeks), store at 4°C. For long-term storage, aliquot and store at -20°C or below. Avoid multiple freeze-thaw cycles.
<b>Concentration</b>	1 mg/ml (Please refer to the vial label for the specific concentration.)
<b>Immunogen</b>	Lamb kidney alpha 1 sodium/potassium ATPase.
<b>Purification</b>	Protein A purified
<b>Conjugation</b>	Unconjugated



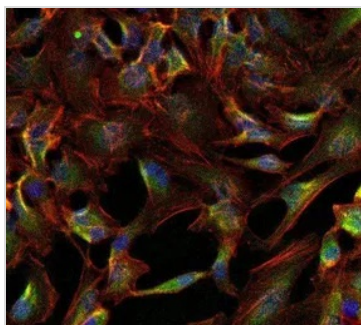
For full product information, images and publications, please visit our [website](#).

For laboratory research use only. Not for any clinical, therapeutic, or diagnostic use in humans or animals. Not for animal or human consumption.

## Note

Purchasers shall not, and agree not to enable third parties to, analyze, copy, reverse engineer or otherwise attempt to determine the structure or sequence of the product.

## DATA IMAGES



### GTx22872 ICC/IF Image

ICC/IF analysis of HeLa cells using GTX22872 Sodium/Potassium ATPase alpha 1 antibody [M8-P1-A3].

Green : Primary antibody

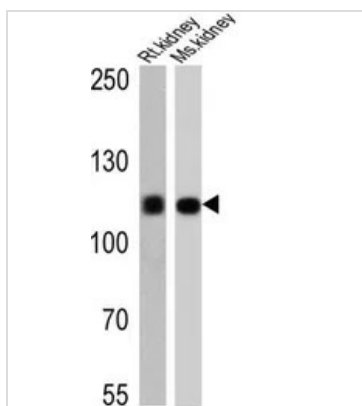
Blue : Nuclei

Red : Actin

Fixation : Formalin

Permeabilization : 0.1% Triton X-100 in TBS for 15 minutes at room temperature

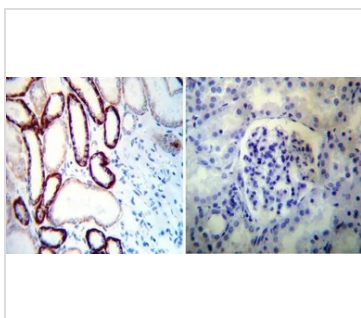
Dilution : 1:100 for at least 1 hour at room temperature



### GTx22872 WB Image

WB analysis of 25 ug of rat kidney (lane 1) and mouse kidney (lane 2) using GTX22872 Sodium/Potassium ATPase alpha 1 antibody [M8-P1-A3].

Dilution : 1:1000



### GTx22872 IHC-P Image

IHC-P analysis of human kidney tissue using GTX22872 Sodium/Potassium ATPase alpha 1 antibody [M8-P1-A3].

Left : Primary antibody

Right : Negative control without primary antibody

Antigen retrieval : heat induced antigen retrieval was performed using 10mM sodium citrate (pH6.0) buffer, microwaved for 8-15 minutes

Dilution : 1:100



For full product information, images and publications, please visit our [website](https://www.genetex.com).