

Sodium/Potassium ATPase beta 1 antibody [M17-P5-F11]

Cat. No. GTX22873

Host	Mouse
Clonality	Monoclonal
Isotype	IgG2a
Application	WB, ICC/IF, IHC-P, IP
Reactivity	Human, Mouse, Sheep, Drosophila, Dog, Pig

Reference (2)

Package

100 µl

APPLICATION

Application Note

*Optimal dilutions/concentrations should be determined by the researcher.

Suggested dilution	Recommended dilution
WB	1:1000-1:10,000
ICC/IF	1:100-1:1000
IHC-P	1:200
IP	Assay dependent

Not tested in other applications.

Calculated MW	35 kDa. (Note)
Product Note	This antibody recognizes and epitope between amino acid residues 195-199 of sheep sodium/potassium ATPase beta 1.

PROPERTIES

Form	Liquid
Buffer	PBS, 0.1% BSA
Preservative	0.05% Sodium azide
Storage	Store as concentrated solution. Centrifuge briefly prior to opening vial. For short-term storage (1-2 weeks), store at 4°C. For long-term storage, aliquot and store at -20°C or below. Avoid multiple freeze-thaw cycles.
Concentration	1 mg/ml (Please refer to the vial label for the specific concentration.)
Immunogen	Purified lamb kidney beta sodium/potassium ATPase.
Purification	Protein A purified
Conjugation	Unconjugated



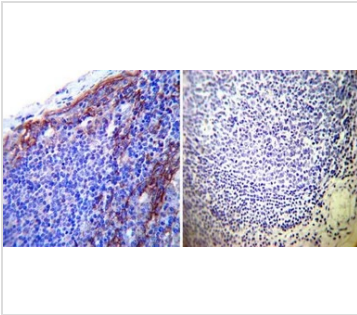
For full product information, images and publications, please visit our [website](#).

Date 2024 / 05 / 20 Page 1 of 2

For laboratory research use only. Not for any clinical, therapeutic, or diagnostic use in humans or animals. Not for animal or human consumption.

Note

Purchasers shall not, and agree not to enable third parties to, analyze, copy, reverse engineer or otherwise attempt to determine the structure or sequence of the product.

DATA IMAGES

GTx22873 IHC-P Image

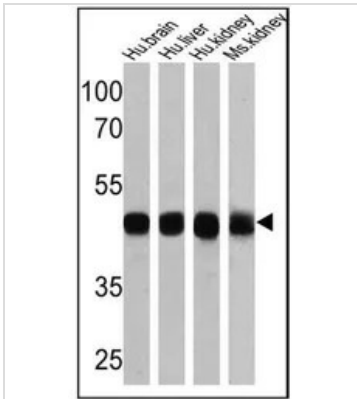
IHC-P analysis of human tonsil tissue using GTx22873 Sodium/Potassium ATPase beta 1 antibody [M17-P5-F11].

Left : Primary antibody

Right : Negative control without primary antibody

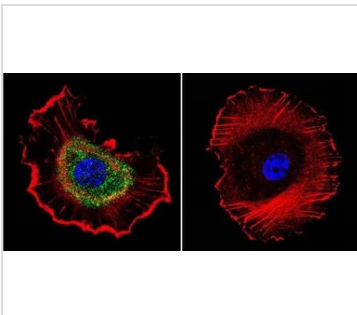
Antigen retrieval : heat induced antigen retrieval was performed using 10mM sodium citrate (pH6.0) buffer, microwaved for 8-15 minutes

Dilution : 1:200


GTx22873 WB Image

WB analysis of 25 ug of human brain (lane 1), human liver (lane 2), human kidney (lane 3) and mouse kidney (lane 4) lysates using GTx22873 Sodium/Potassium ATPase beta 1 antibody [M17-P5-F11].

Dilution : 1:5000


GTx22873 ICC/IF Image

ICC/IF analysis of MCF-7 cells using GTx22873 Sodium/Potassium ATPase beta 1 antibody [M17-P5-F11].

Cells were probed without (right) or with(left) an antibody.

Green : Primary antibody

Blue : Nuclei

Red : Actin

Fixation : formaldehyde

Dilution : 1:200 overnight at 4°C



For full product information, images and publications, please visit our [website](https://www.genetex.com).