

Sarcalumenin antibody [XIIC4]

Cat. No. GTX22874

Host	Mouse
Clonality	Monoclonal
Isotype	IgG1
Applications	WB, ICC/IF, IHC
Reactivity	Human, Mouse, Rabbit, Dog, Guinea pig

Package
100 µl

Applications

Application Note

*Optimal dilutions/concentrations should be determined by the researcher.

Suggested dilution	Recommended dilution
WB	1-3 µg/ml
ICC/IF	1/500
IHC	Assay dependent

Not tested in other applications.

Calculated MW 98 kDa. ([Note](#))

Product Note This antibody specifically detects sarcalumenin and the 53 kDa glycoprotein splice variant.

Properties

Form	Liquid
Buffer	buffer
Preservative	0.05% Sodium azide
Storage	Store as concentrated solution. Centrifuge briefly prior to opening vial. For short-term storage (1-2 weeks), store at 4°C. For long-term storage, aliquot and store at -20°C or below. Avoid multiple freeze-thaw cycles.
Concentration	1 mg/ml (Please refer to the vial label for the specific concentration.)
Immunogen	Purified rabbit sarcoplasmic reticulum membrane vesicles.
Purification	Protein A purified
Conjugation	Unconjugated



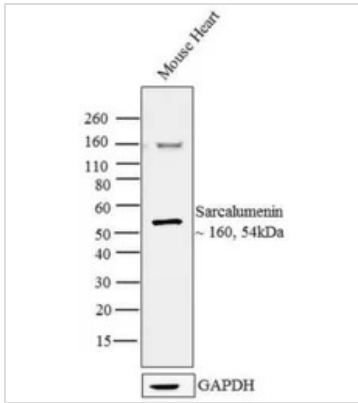
For full product information, images and publications, please visit our [website](#).

For laboratory research use only. Not for any clinical, therapeutic, or diagnostic use in humans or animals. Not for animal or human consumption.

Note

Purchasers shall not, and agree not to enable third parties to, analyze, copy, reverse engineer or otherwise attempt to determine the structure or sequence of the product.

DATA IMAGES

**GTX22874 WB Image**

WB analysis of tissue extract (30 μ g lysate) of Mouse Heart using GTX22874 SarcCalumenin antibody [XIIIC4].

Dilution : 2 μ g/ml



For full product information, images and publications, please visit our [website](#).