

Prion Protein (PrP) antibody [1E5 / G6]

Cat. No. GTX22879

Host	Mouse
Clonality	Monoclonal
Isotype	IgG1
Applications	WB, ELISA
Reactivity	Human, Bovine

Package
50 µg

Applications

Application Note

ELISA: use at a concentration of 4 ng/ml. Western blot (non-reducing conditions): use at a concentration of 10 µg/ml. Optimal dilutions / concentrations should be determined by the end user.

Product Note This antibody detects: Human recombinant prion protein. Bovine recombinant, native and PrP^{res} proteinase K treated prion protein.

Properties

Form	Liquid
Buffer	PBS
Preservative	0.02% Sodium azide
Storage	Store as concentrated solution. Centrifuge briefly prior to opening vial. For short-term storage (1-2 weeks), store at 4°C. For long-term storage, aliquot and store at -20°C or below. Avoid multiple freeze-thaw cycles.
Concentration	2 mg/ml (Please refer to the vial label for the specific concentration.)
Immunogen	Recombinant bovine prion protein. Immunization was performed according to the protocol described by Hofmann, J. et al.
Purification	Immunogen affinity purified
Conjugation	Unconjugated

Note

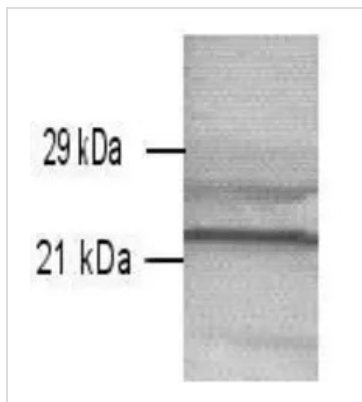
For laboratory research use only. Not for any clinical, therapeutic, or diagnostic use in humans or animals. Not for animal or human consumption.

Purchasers shall not, and agree not to enable third parties to, analyze, copy, reverse engineer or otherwise attempt to determine the structure or sequence of the product.



For full product information, images and publications, please visit our [website](#).

DATA IMAGES



GTx22879 WB Image

GTx22879 at a 1mg/ml concentration staining ~23 kDa (mature) and ~28 kDa (pro-peptide) native bovine prion protein from brain (*M. oblongata*; 100 mg comprising 10% homogenised brain, diluted 1:10 in buffer, 10ml loaded) by Western blot (non-reducing conditions)



For full product information, images and publications, please visit our [website](#).