

COPB antibody

Cat. No. GTX22899

Host	Rabbit
Clonality	Polyclonal
Isotype	IgG
Applications	WB, ICC/IF, FCM, IP, IHC
Reactivity	Human, Mouse, Rat, Yeast, Bovine, Hamster, Primate

References (1)

Package

100 µl

Applications

Application Note

*Optimal dilutions/concentrations should be determined by the researcher.

Suggested dilution	Recommended dilution
WB	2 µg/mL
ICC/IF	2 µg/mL
FCM	3-5 µg/10 ⁶ cells
IP	Assay dependent
IHC	Assay dependent

Not tested in other applications.

Calculated MW 107 kDa. ([Note](#))

Properties

Form	Liquid
Buffer	PBS, 0.1% BSA
Preservative	0.05% Sodium azide
Storage	Store as concentrated solution. Centrifuge briefly prior to opening vial. For short-term storage (1-2 weeks), store at 4°C. For long-term storage, aliquot and store at -20°C or below. Avoid multiple freeze-thaw cycles.
Concentration	4.4 mg/ml (Please refer to the vial label for the specific concentration.)
Immunogen	Synthetic peptide corresponding to residues E(496) A G E L K P E E E I T V G P V Q K(513) of rat beta-COP.
Purification	Ammonium sulfate precipitation
Conjugation	Unconjugated



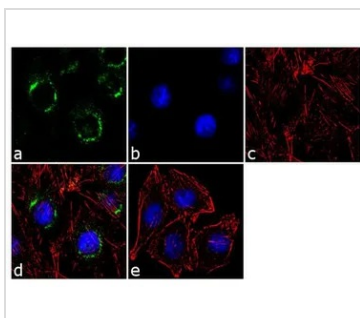
For full product information, images and publications, please visit our [website](#).

For laboratory research use only. Not for any clinical, therapeutic, or diagnostic use in humans or animals. Not for animal or human consumption.

Note

Purchasers shall not, and agree not to enable third parties to, analyze, copy, reverse engineer or otherwise attempt to determine the structure or sequence of the product.

DATA IMAGES

**GTX22899 ICC/IF Image**

ICC/IF analysis of L6 cells using GTX22899 COPB antibody. Panel e is a no primary antibody control.

Green : Primary antibody

Blue : Nuclei

Red : Actin

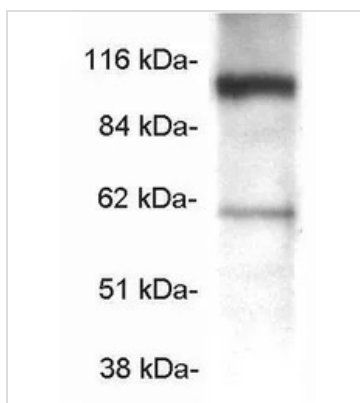
Fixation : 4% paraformaldehyde

Permeabilization : 0.1% Triton X-100 for 10 minute

Dilution : 2 µg/ml in 0.1% BSA and incubated for 3 hours at room temperature

**GTX22899 ICC/IF Image**

ICC/IF analysis of NIH-3T3 cells using GTX22899 COPB antibody.

**GTX22899 WB Image**

WB analysis of rat brain homogenate using GTX22899 COPB antibody.



For full product information, images and publications, please visit our [website](#).