

EEA1 antibody

Cat. No. GTX22900

Host	Rabbit
Clonality	Polyclonal
Isotype	IgG
Applications	WB, ICC/IF, FCM, IHC
Reactivity	Human, Mouse, Rat

Package
100 µg

Applications

Application Note

*Optimal dilutions/concentrations should be determined by the researcher.

Suggested dilution	Recommended dilution
WB	2 µg/mL
ICC/IF	2 µg/mL
FCM	3-5 µg/10 ⁶ cells
IHC	Assay dependent

Not tested in other applications.

Calculated MW 161 kDa. ([Note](#))

Properties

Form	Liquid
Buffer	PBS, 0.1% BSA
Preservative	0.05% Sodium azide
Storage	Store as concentrated solution. Centrifuge briefly prior to opening vial. For short-term storage (1-2 weeks), store at 4°C. For long-term storage, aliquot and store at -20°C or below. Avoid multiple freeze-thaw cycles.
Concentration	1 mg/ml (Please refer to the vial label for the specific concentration.)
Immunogen	Synthetic peptide corresponding to residues T(1391) P S S K K P V R V C D A C F N D L Q G(1410) of human EEA1.
Purification	Purified by antigen-affinity chromatography
Conjugation	Unconjugated

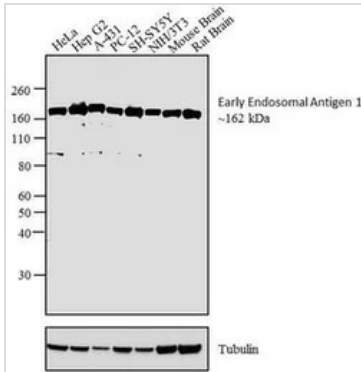
Note

For laboratory research use only. Not for any clinical, therapeutic, or diagnostic use in humans or animals. Not for animal or human consumption.

Purchasers shall not, and agree not to enable third parties to, analyze, copy, reverse engineer or otherwise attempt to determine the structure or sequence of the product.

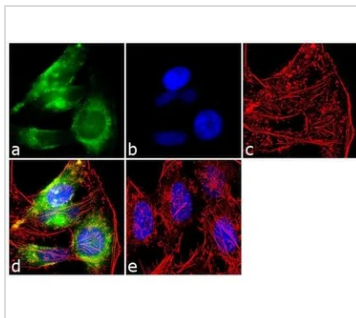


For full product information, images and publications, please visit our [website](#).

DATA IMAGES

GTX22900 WB Image

WB analysis of HeLa (Lane 1), Hep G2 (Lane 2) A-431 (Lane 3) PC-12 (Lane 4), SH-SY5Y (Lane 5), NIH/3T3 (Lane 6), Mouse brain tissue (Lane 7) and Rat brain tissue (Lane 8) using GTX22900 EEA1 antibody.

Dilution : 2 µg/ml


GTX22900 ICC/IF Image

ICC/IF analysis of HeLa cells using GTX22900 EEA1 antibody. Panel e is a no primary antibody control.

Green : Primary antibody

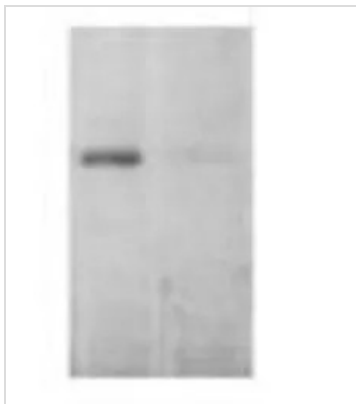
Blue : Nuclei

Red : Actin

Fixation : 4% paraformaldehyde

Permeabilization : 0.1% Triton X-100 for 10 minute

Dilution : 2 µg/ml in 0.1% BSA and incubated for 3 hours at room temperature


GTX22900 WB Image

WB analysis of mouse brain using GTX22900 EEA1 antibody.



For full product information, images and publications, please visit our [website](http://www.genetex.com).