

Grp78 antibody

Cat. No. GTX22902

Host	Rabbit
Clonality	Polyclonal
Isotype	IgG
Applications	WB, ICC/IF, IP
Reactivity	Human, Mouse, Rat, Dog, Hamster, Mosquito

References (1)

Package

100 µg

Applications

Application Note

*Optimal dilutions/concentrations should be determined by the researcher.

Suggested dilution	Recommended dilution
WB	2 µg/ml
ICC/IF	Assay dependent
IP	Assay dependent

Not tested in other applications.

Calculated MW 72 kDa. ([Note](#))

Properties

Form	Liquid
Buffer	PBS
Preservative	0.05% Sodium azide
Storage	Store as concentrated solution. Centrifuge briefly prior to opening vial. For short-term storage (1-2 weeks), store at 4°C. For long-term storage, aliquot and store at -20°C or below. Avoid multiple freeze-thaw cycles.
Concentration	1 mg/ml (Please refer to the vial label for the specific concentration.)
Immunogen	Synthetic peptide corresponding to residues C T(643) G E E D T S E K D E L(654) of rat GRP78.
Purification	Purified by antigen-affinity chromatography
Conjugation	Unconjugated

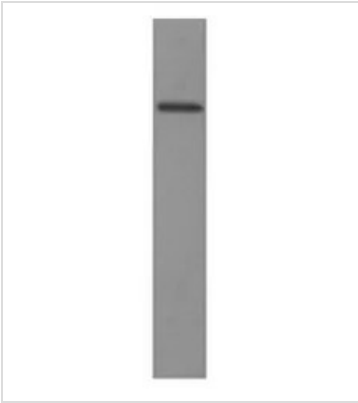
Note

For laboratory research use only. Not for any clinical, therapeutic, or diagnostic use in humans or animals. Not for animal or human consumption.

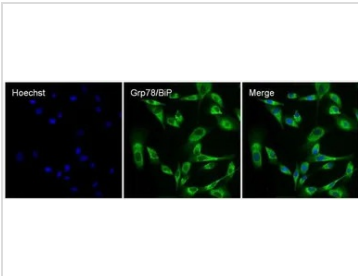
Purchasers shall not, and agree not to enable third parties to, analyze, copy, reverse engineer or otherwise attempt to determine the structure or sequence of the product.



For full product information, images and publications, please visit our [website](#).

DATA IMAGES

GTx22902 WB Image

WB analysis of rat liver lysate using GTx22902 Grp78 antibody.


GTx22902 ICC/IF Image

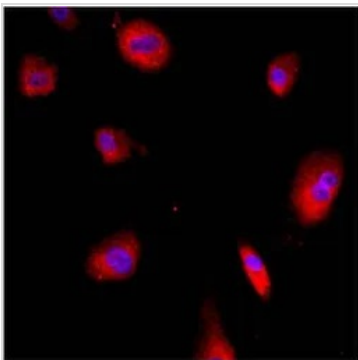
ICC/IF analysis of MDCK cells using GTx22902 Grp78 antibody.

Green : Primary antibody

Blue : cell nucleus

Permeabilization : 0.1% Triton X-100

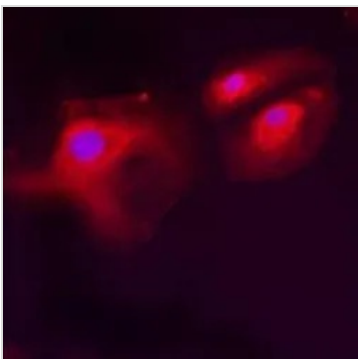
Dilution : 10 µg/ml in blocking buffer for at least 1 hour at room temperature


GTx22902 ICC/IF Image

ICC/IF analysis of HMVEC Cells using GTx22902 Grp78 antibody.

Red : Primary antibody

Blue : Nuclei


GTx22902 ICC/IF Image

ICC/IF analysis of HeLa cells using GTx22902 Grp78 antibody.

Red : Primary antibody

Blue : Nuclei



For full product information, images and publications, please visit our [website](https://www.genetex.com).