

RASA1 antibody [B4F8]

Cat. No. GTX22922

Host	Mouse
Clonality	Monoclonal
Isotype	IgG2a
Applications	WB, ICC/IF, IP
Reactivity	Human, Mouse, Rat, Bovine, Primate

Package
100 µg

Applications

Application Note

*Optimal dilutions/concentrations should be determined by the researcher.

Suggested dilution	Recommended dilution
WB	10 µg/ml
ICC/IF	5 µg/ml
IP	1-5 µg

Not tested in other applications.

Calculated MW 116 kDa. ([Note](#))**Product Note** Epitope mapping studies suggest that this antibody binds a portion of GAP that contains the src homology regions SH2 and SH3.

Properties

Form	Liquid
Buffer	buffer
Preservative	0.05% Sodium azide
Storage	Store as concentrated solution. Centrifuge briefly prior to opening vial. For short-term storage (1-2 weeks), store at 4°C. For long-term storage, aliquot and store at -20°C or below. Avoid multiple freeze-thaw cycles.
Concentration	Batch dependent (Please refer to the vial label for the specific concentration.)
Immunogen	Full length recombinant human GAP.
Purification	Protein A purified
Conjugation	Unconjugated



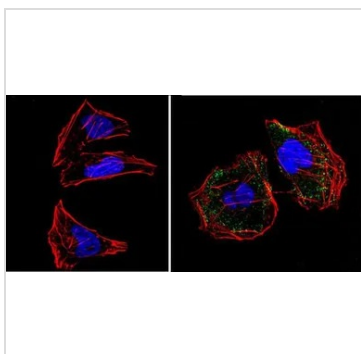
For full product information, images and publications, please visit our [website](#).

For laboratory research use only. Not for any clinical, therapeutic, or diagnostic use in humans or animals. Not for animal or human consumption.

Note

Purchasers shall not, and agree not to enable third parties to, analyze, copy, reverse engineer or otherwise attempt to determine the structure or sequence of the product.

DATA IMAGES



GTX22922 ICC/IF Image

ICC/IF analysis of HeLa cells using GTX22922 RASA1 antibody [B4F8]. Cells were probed without (left) or with(right) an antibody.

Green : Primary antibody

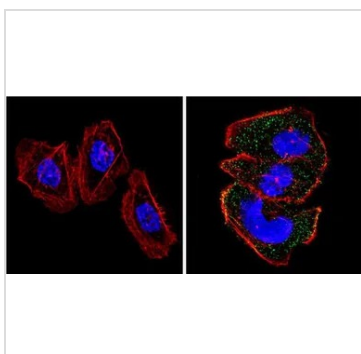
Blue : Nuclei

Red : Actin

Fixation : Formalin

Permeabilization : 0.1% Triton X-100 in TBS for 5-10 minute

Dilution : 1:200 incubated overnight at 4 °C



GTX22922 ICC/IF Image

ICC/IF analysis of A431 cells using GTX22922 RASA1 antibody [B4F8]. Cells were probed without (left) or with(right) an antibody.

Green : Primary antibody

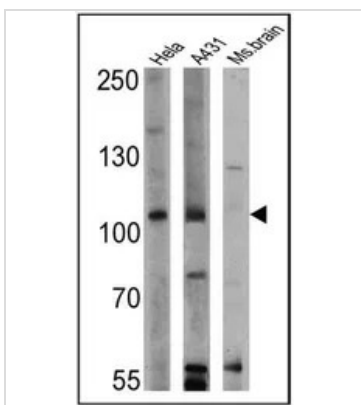
Blue : Nuclei

Red : Actin

Fixation : Formalin

Permeabilization : 0.1% Triton X-100 in TBS for 5-10 minute

Dilution : 1:200 incubated overnight at 4 °C



GTX22922 WB Image

WB analysis of 25 ug of HeLa (Lane 1), A431 (Lane 2), and mouse brain cell lysates (Lane 3) using GTX22922 RASA1 antibody [B4F8].

Dilution : 1:200



For full product information, images and publications, please visit our [website](#).