

## PSD93 antibody

Cat. No. GTX22930

<b>Host</b>	Rabbit
<b>Clonality</b>	Polyclonal
<b>Isotype</b>	IgG
<b>Applications</b>	WB, ICC/IF, IHC-Fr, FCM
<b>Reactivity</b>	Human, Mouse, Rat

Package  
100 µg

## Applications

## Application Note

\*Optimal dilutions/concentrations should be determined by the researcher.

Suggested dilution	Recommended dilution
WB	3 - 5 µg/ml
ICC/IF	Assay dependent
IHC-Fr	5 µg/ml
FCM	3-5 µg/10 <sup>6</sup> cells

Not tested in other applications.

**Calculated MW** 95 kDa. ( [Note](#) )

**Product Note** This antibody does not detect other synapse-associated protein family members.

## Properties

<b>Form</b>	Liquid
<b>Buffer</b>	PBS, 0.1% BSA
<b>Preservative</b>	0.05% Sodium azide
<b>Storage</b>	Store as concentrated solution. Centrifuge briefly prior to opening vial. For short-term storage (1-2 weeks), store at 4°C. For long-term storage, aliquot and store at -20°C or below. Avoid multiple freeze-thaw cycles.
<b>Concentration</b>	1 mg/ml (Please refer to the vial label for the specific concentration.)
<b>Immunogen</b>	Synthetic peptide corresponding to residues N(352) K L C D K P A S P R H Y S P(366) of human PSD-93.
<b>Purification</b>	Purified by antigen-affinity chromatography
<b>Conjugation</b>	Unconjugated



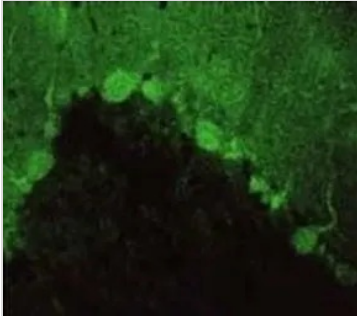
For full product information, images and publications, please visit our [website](#).

For laboratory research use only. Not for any clinical, therapeutic, or diagnostic use in humans or animals. Not for animal or human consumption.

## Note

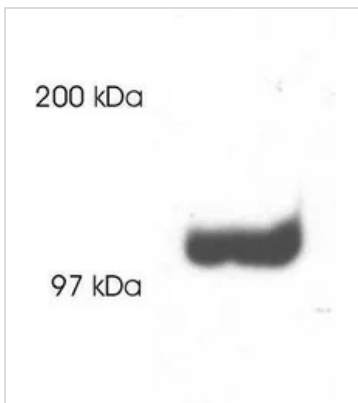
Purchasers shall not, and agree not to enable third parties to, analyze, copy, reverse engineer or otherwise attempt to determine the structure or sequence of the product.

## DATA IMAGES



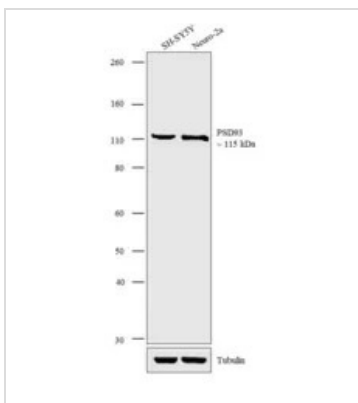
### GTx22930 IHC-Fr Image

IHC-Fr analysis of rat cerebellum tissue using GTx22930 PSD93 antibody.



### GTx22930 WB Image

WB analysis of rat brain extract using GTx22930 PSD93 antibody.



### GTx22930 WB Image

WB analysis of membrane-enriched extracts (30 µg lysate) of SHY-SY5Y (Lane 1), and Neuro-2a (Lane 2) using GTx22930 PSD93 antibody.

Dilution : 3 µg/ml



For full product information, images and publications, please visit our [website](#).