

RANBP2 antibody

Cat. No. GTX22938

Host	Rabbit
Clonality	Polyclonal
Isotype	IgG
Applications	WB, IHC-Fr, IHC
Reactivity	Human, Bovine

Package
100 µg

Applications

Application Note

*Optimal dilutions/concentrations should be determined by the researcher.

Suggested dilution	Recommended dilution
WB	1 µg/ml
IHC-Fr	10 µg/ml
IHC	Assay dependent

Not tested in other applications.

Calculated MW 358 kDa. ([Note](#))

Properties

Form	Liquid
Buffer	PBS, 0.1% BSA
Preservative	0.05% Sodium azide
Storage	Store as concentrated solution. Centrifuge briefly prior to opening vial. For short-term storage (1-2 weeks), store at 4°C. For long-term storage, aliquot and store at -20°C or below. Avoid multiple freeze-thaw cycles.
Concentration	1 mg/ml (Please refer to the vial label for the specific concentration.)
Immunogen	Synthetic peptide corresponding to residues M(1) R R S K A D V E R Y I A S V Q G S(18) of human RanBP2.
Purification	Purified by antigen-affinity chromatography
Conjugation	Unconjugated

Note

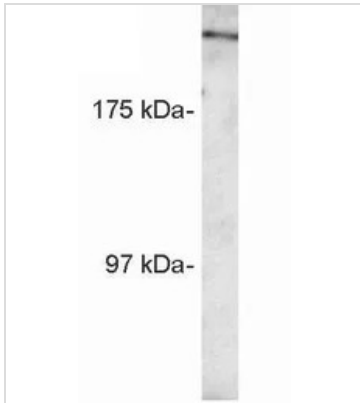
For laboratory research use only. Not for any clinical, therapeutic, or diagnostic use in humans or animals. Not for animal or human consumption.

Purchasers shall not, and agree not to enable third parties to, analyze, copy, reverse engineer or otherwise attempt to determine the structure or sequence of the product.

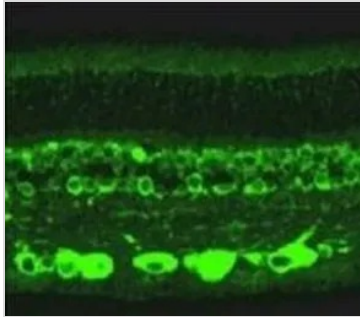


For full product information, images and publications, please visit our [website](#).

DATA IMAGES

**GTX22938 WB Image**

WB analysis of human retinal extracts using GTX22938 RANBP2 antibody.

**GTX22938 IHC-Fr Image**

IHC-Fr analysis of bovine retina tissue using GTX22938 RANBP2 antibody.



For full product information, images and publications, please visit our [website](#).