

## RPSA antibody [MLuC5]

**Cat. No. GTX23099**

<b>Host</b>	Mouse
<b>Clonality</b>	Monoclonal
<b>Isotype</b>	IgM
<b>Applications</b>	WB, ICC/IF, IHC-P, IHC-Fr, FCM, Blocking, Neutralizing /Inhibition
<b>Reactivity</b>	Human, Mouse, Rat

References ( 3 )

Package

500 µl

## Applications

**Application Note**

\*Optimal dilutions/concentrations should be determined by the researcher.

Suggested dilution	Recommended dilution
WB	Assay dependent
ICC/IF	Assay dependent
IHC-P	Assay dependent
IHC-Fr	Assay dependent
FCM	Assay dependent
Blocking	Assay dependent
Neutralizing /Inhibition	Assay dependent

Not tested in other applications.

**Calculated MW** 33 kDa. ( [Note](#) )

## Properties

<b>Form</b>	Liquid
<b>Buffer</b>	PBS
<b>Preservative</b>	< 0.1% sodium azide
<b>Storage</b>	Store as concentrated solution. Centrifuge briefly prior to opening vial. Store at 4°C. DO NOT FREEZE.
<b>Concentration</b>	0.2 mg/ml (Please refer to the vial label for the specific concentration.)
<b>Immunogen</b>	Small cell lung carcinoma N592 live cells
<b>Purification</b>	Purified IgM
<b>Conjugation</b>	Unconjugated



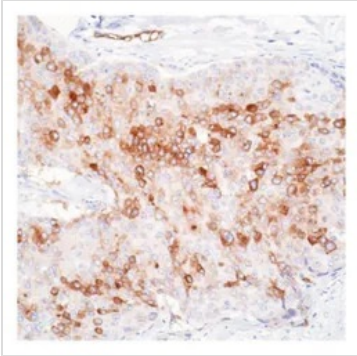
For full product information, images and publications, please visit our [website](#).

For laboratory research use only. Not for any clinical, therapeutic, or diagnostic use in humans or animals. Not for animal or human consumption.

**Note**

Purchasers shall not, and agree not to enable third parties to, analyze, copy, reverse engineer or otherwise attempt to determine the structure or sequence of the product.

## DATA IMAGES

**GTX23099 IHC-P Image**

IHC-P analysis of tissue using GTX23099 RPSA antibody [MLuC5].



For full product information, images and publications, please visit our [website](#).