

Ku70 + Ku80 antibody [162]

Cat. No. GTX23108

Host	Mouse
Clonality	Monoclonal
Isotype	IgG2a
Applications	WB, ICC/IF, IHC-P, FCM, IP, EMSA, RIP
Reactivity	Human, Mouse, Rat, Monkey, Xenopus laevis

References (5)

Package

500 µl

Applications

Application Note

Flow Cytometry / Immunofluorescence: assay dependent. Immunoprecipitation (with protein A): use at a concentration of 2µg/mg protein lysate. Immunohistology (formalin fixed paraffin embedded): use at a concentration 1 - 2µg/ml for 30 min at RT (antigen retrieval is not required). Optimal dilutions / concentrations should be determined by the end user. This antibody is not suitable for Western blot.

Properties

Form	Liquid
Buffer	PBS, 0.2% BSA
Preservative	0.09% Sodium azide
Storage	Store as concentrated solution. Centrifuge briefly prior to opening vial. Store at 4°C.
Concentration	0.2 mg/ml (Please refer to the vial label for the specific concentration.)
Immunogen	Human B cell nuclei from plasmacytoid 2p68 cells.
Purification	Purified by ammonium sulfate precipitation.
Conjugation	Unconjugated

Note

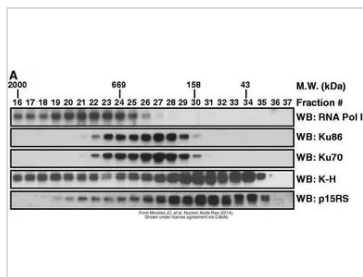
For laboratory research use only. Not for any clinical, therapeutic, or diagnostic use in humans or animals. Not for animal or human consumption.

Purchasers shall not, and agree not to enable third parties to, analyze, copy, reverse engineer or otherwise attempt to determine the structure or sequence of the product.



For full product information, images and publications, please visit our [website](#).

DATA IMAGES


GTX23108 WB Image

The data was published in the journal Nucleic Acids Res in 2014. [PMID: 24589584](https://pubmed.ncbi.nlm.nih.gov/24589584/)



For full product information, images and publications, please visit our [website](https://www.genetex.com).