

Filaggrin antibody [FLG01]

Cat. No. GTX23137

Host	Mouse
Clonality	Monoclonal
Isotype	IgG1
Applications	WB, ICC/IF, IHC-P, IHC-Fr
Reactivity	Human, Mouse

[References \(9 \)](#)

[Package](#)

500 µl

Applications

Application Note

Immunohistochemistry (formalin fixed paraffin embedded): use at a concentration of 2 - 4µg / ml for 30 min at RT. Optimal dilutions / concentrations should be determined by the end user. Staining of formalin-fixed tissues requires boiling tissue sections in 10mM citrate buffer, pH 6.0, for 10-20 min followed by cooling at RT for 20 min.

Calculated MW 435 kDa. ([Note](#))

Properties

Form	Liquid
Buffer	PBS, 0.2% BSA
Preservative	0.09% Sodium azide
Storage	Store as concentrated solution. Centrifuge briefly prior to opening vial. Store at 4°C. DO NOT FREEZE.
Concentration	0.2 mg/ml (Please refer to the vial label for the specific concentration.)
Immunogen	Recombinant full length protein
Purification	Protein G purified
Conjugation	Unconjugated

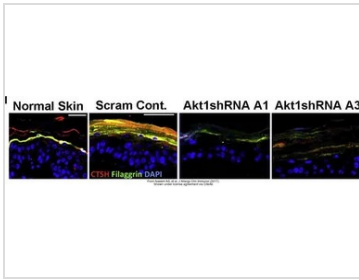
Note

For laboratory research use only. Not for any clinical, therapeutic, or diagnostic use in humans or animals. Not for animal or human consumption.

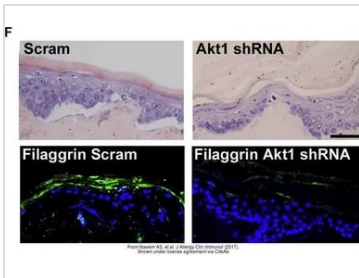
Purchasers shall not, and agree not to enable third parties to, analyze, copy, reverse engineer or otherwise attempt to determine the structure or sequence of the product.



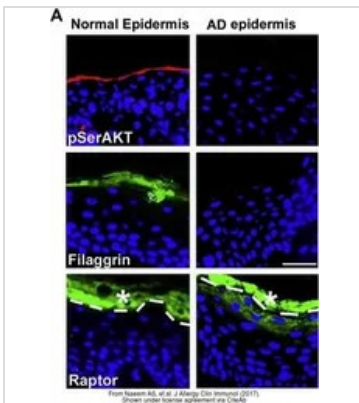
For full product information, images and publications, please visit our [website](#).

DATA IMAGES

GTX23137 IHC-Fr Image

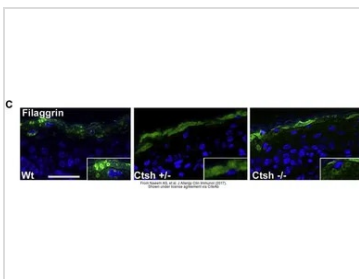
The data was published in the journal J Allergy Clin Immunol in 2017. [PMID: 27913303](#)


GTX23137 IHC-Fr Image

The data was published in the journal J Allergy Clin Immunol in 2017. [PMID: 27913303](#)


GTX23137 Image

The data was published in the journal J Allergy Clin Immunol in 2017. [PMID: 27913303](#)


GTX23137 Image

The data was published in the journal J Allergy Clin Immunol in 2017. [PMID: 27913303](#)



For full product information, images and publications, please visit our [website](#).