

Bcl-X antibody [2H12]

Cat. No. GTX23193

Host	Mouse
Clonality	Monoclonal
Isotype	IgG2a
Application	WB, ICC/IF, IHC-P, FACS
Reactivity	Human, Mouse, Rat, Pig

Package
500 µl

APPLICATION

Application Note

*Optimal dilutions/concentrations should be determined by the researcher.

Suggested dilution	Recommended dilution
WB	Assay dependent
ICC/IF	Assay dependent
IHC-P	Assay dependent
FACS	Assay dependent

Not tested in other applications.

Calculated MW 26 kDa. ([Note](#))

Product Note GTX23193 reacts with both Bcl-XS and Bcl-XL proteins.

PROPERTIES

Form	Liquid
Buffer	BSA
Preservative	Sodium azide
Storage	Store as concentrated solution. Centrifuge briefly prior to opening vial. Store at 4°C. DO NOT FREEZE.
Immunogen	A synthetic peptide, aa 3-14 (Cys-QSNRELVDLFLS) of human Bcl-X protein. This amino acid sequence is shared by human and murine Bcl-X protein.
Purification	Unpurified
Conjugation	Unconjugated

Note

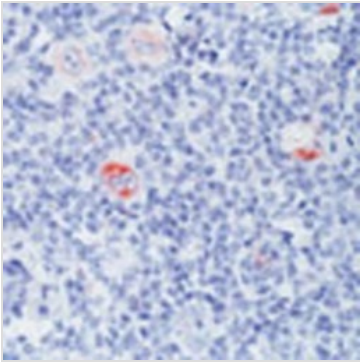
For laboratory research use only. Not for any clinical, therapeutic, or diagnostic use in humans or animals. Not for animal or human consumption.

Purchasers shall not, and agree not to enable third parties to, analyze, copy, reverse engineer or otherwise attempt to determine the structure or sequence of the product.



For full product information, images and publications, please visit our [website](#).

DATA IMAGES



GTX23193 IHC-P Image

Formalin-fixed, paraffin-embedded human Hodgkins lymphoma stained with GTX23193 using peroxidase-conjugate and AEC chromogen. Note cell membrane staining of Reed-Sternberg cells.



For full product information, images and publications, please visit our [website](#).