

L1CAM antibody [UJ127]

Cat. No. GTX23200

Host	Mouse
Clonality	Monoclonal
Isotype	IgG1
Applications	WB, IHC-P, IP, IHC
Reactivity	Human, Rat

References (6)

Package

500 µl

Applications

Application Note

Immunoprecipitation (natured and denatured): use at a concentration of 2µg / mg. Western Blotting: use at a concentration of 1 - 2µg / ml for 2hrs at RT. Immunohistochemistry (formalin fixed paraffin embedded): use at a concentration of 1 - 2µg / ml for 30 min at RT. Optimal dilutions/concentrations should be determined by the end user. By Western blot, this antibody detects a band of 220-240 kDa, which corresponds to the predicted molecular weight of L1CAM. Staining of formalin-fixed tissues requires boiling tissue sections in 10mM citrate buffer, pH 6.0, for 10-20 min followed by cooling at RT for 20 min.

Calculated MW	140 kDa. (Note)
Product Note	GTX23200 is useful in the identification of primitive neuroectodermal tumors. It binds to tumors of neuroectodermal and glial origin. It does not bind to pediatric or adult brain.

Properties

Form	Liquid
Buffer	PBS, 0.2% BSA
Preservative	0.09% Sodium azide
Storage	Store as concentrated solution. Centrifuge briefly prior to opening vial. Store at 4°C. DO NOT FREEZE.
Concentration	0.2 mg/ml (Please refer to the vial label for the specific concentration.)
Immunogen	Homogenous suspension of 16 week human fetal brain.
Purification	Protein G purified
Conjugation	Unconjugated

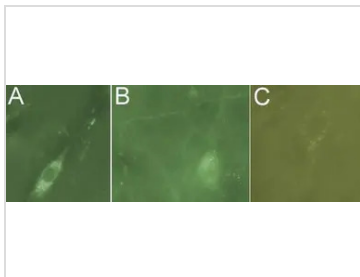
Note

For laboratory research use only. Not for any clinical, therapeutic, or diagnostic use in humans or animals. Not for animal or human consumption.

Purchasers shall not, and agree not to enable third parties to, analyze, copy, reverse engineer or otherwise attempt to determine the structure or sequence of the product.



For full product information, images and publications, please visit our [website](#).

DATA IMAGES

GTX23200 IHC Image

GTX23200 at a dilution of 1/1000, staining L1CAM (green; Alexa 488 secondary at 1/2000) on 30m coronal rat brain tissue sections in free floating IHC. Images showing neuron body, cytoplasm and axon labeling: [A] neuron; 40x objective [B] neuron and axons;



For full product information, images and publications, please visit our [website](https://www.genetex.com).