

TRPM8 antibody

Cat. No. GTX23243

Host	Rabbit
Clonality	Polyclonal
Isotype	IgG
Application	WB, IHC-P
Reactivity	Human, Mouse

Reference (2)
Package
100 µl

APPLICATION

Application Note

For WB: Use at a dilution of 1/500 - 1/1,000. Optimal dilutions/concentrations should be determined by the researcher

Calculated MW	128 kDa. (Note)
Product Note	Reacts with the recombinant form of the human TRPP 8 protein.

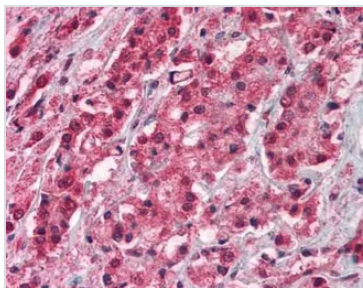
PROPERTIES

Form	Liquid
Buffer	PBS
Preservative	0.02% Sodium azide
Storage	Store as concentrated solution. Centrifuge briefly prior to opening vial. For short-term storage (1-2 weeks), store at 4°C. For long-term storage, aliquot and store at -20°C or below. Avoid multiple freeze-thaw cycles.
Concentration	1 mg/ml (Please refer to the vial label for the specific concentration.)
Immunogen	Synthetic peptides - amino acids 278-292 RNQLEKYISERTIQD and the C-terminus sequence NDLKGLLKEIANKIK of TRPM8 protein
Purification	Affinity purified IgG
Conjugation	Unconjugated
Note	<p>For laboratory research use only. Not for any clinical, therapeutic, or diagnostic use in humans or animals. Not for animal or human consumption.</p> <p>Purchasers shall not, and agree not to enable third parties to, analyze, copy, reverse engineer or otherwise attempt to determine the structure or sequence of the product.</p>



For full product information, images and publications, please visit our [website](#).

DATA IMAGES



GTX23243 IHC-P Image

Immunohistochemical analysis of formalin-fixed paraffin-embedded prostate carcinoma using GTX23243



For full product information, images and publications, please visit our [website](#).