

PSMB6 antibody

Cat. No. GTX23331

Host	Rabbit
Clonality	Polyclonal
Isotype	IgG
Application	WB, ICC/IF
Reactivity	Human, Mouse, Bovine

Package
100 µg

APPLICATION

Application Note

*Optimal dilutions/concentrations should be determined by the researcher.

Suggested dilution	Recommended dilution
WB	1 µg/ml
ICC/IF	1:10-1:100

Not tested in other applications.

Calculated MW 25 kDa. ([Note](#))

PROPERTIES

Form	Liquid
Buffer	PBS, 0.1% BSA
Preservative	0.05% Sodium azide
Storage	Store as concentrated solution. Centrifuge briefly prior to opening vial. For short-term storage (1-2 weeks), store at 4°C. For long-term storage, aliquot and store at -20°C or below. Avoid multiple freeze-thaw cycles.
Concentration	1 mg/ml (Please refer to the vial label for the specific concentration.)
Immunogen	Synthetic Peptides: C(41) R S G S A A D T Q A V/I A D A V T Y(58)
Purification	Purified by antigen-affinity chromatography
Conjugation	Unconjugated

Note

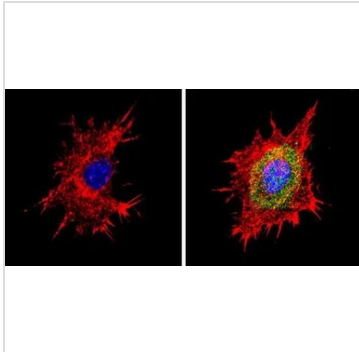
For laboratory research use only. Not for any clinical, therapeutic, or diagnostic use in humans or animals. Not for animal or human consumption.

Purchasers shall not, and agree not to enable third parties to, analyze, copy, reverse engineer or otherwise attempt to determine the structure or sequence of the product.



For full product information, images and publications, please visit our [website](#).

DATA IMAGES



GTX23331 ICC/IF Image

ICC/IF analysis of BAEC cells using GTX23331 PSMB6 antibody. Cells were probed without (left) or with(right) an antibody.

Green : Primary antibody

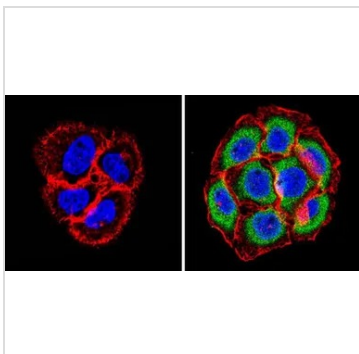
Blue : Nuclei

Red : Actin

Fixation : Formalin

Permeabilization : 0.1% Triton X-100 in TBS for 5-10 minute

Dilution : 1:20 overnight at 4°C



GTX23331 ICC/IF Image

ICC/IF analysis of A431 cells using GTX23331 PSMB6 antibody. Cells were probed without (left) or with(right) an antibody.

Green : Primary antibody

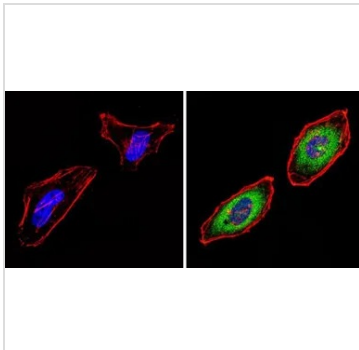
Blue : Nuclei

Red : Actin

Fixation : Formalin

Permeabilization : 0.1% Triton X-100 in TBS for 5-10 minute

Dilution : 1:20 overnight at 4°C



GTX23331 ICC/IF Image

ICC/IF analysis of HeLa cells using GTX23331 PSMB6 antibody. Cells were probed without (left) or with(right) an antibody.

Green : Primary antibody

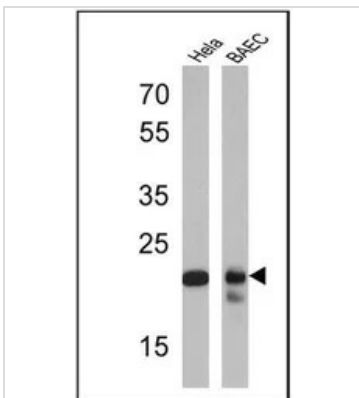
Blue : Nuclei

Red : Actin

Fixation : Formalin

Permeabilization : 0.1% Triton X-100 in TBS for 5-10 minute

Dilution : 1:20 overnight at 4°C



GTX23331 WB Image

WB analysis of 25 ug of HeLa (lane 1) and BAEC (lane 2) cell lysates using GTX23331 PSMB6 antibody.

Dilution : 1:1000



For full product information, images and publications, please visit our [website](https://www.genetex.com).