

VAMP2 antibody

Cat. No. GTX23347

Host	Rabbit
Clonality	Polyclonal
Isotype	IgG
Applications	WB, ICC/IF, FCM, IP
Reactivity	Human, Mouse, Rat

Package
100 µg

Applications

Application Note

*Optimal dilutions/concentrations should be determined by the researcher.

Suggested dilution	Recommended dilution
WB	0.1-1 µg/ml
ICC/IF	Assay dependent
FCM	3-5 µg/10 ⁶ cells
IP	Assay dependent

Not tested in other applications.

Calculated MW 13 kDa. ([Note](#))

Properties

Form	Liquid
Buffer	PBS, 0.1% BSA
Preservative	0.05% Sodium azide
Storage	Store as concentrated solution. Centrifuge briefly prior to opening vial. For short-term storage (1-2 weeks), store at 4°C. For long-term storage, aliquot and store at -20°C or below. Avoid multiple freeze-thaw cycles.
Concentration	1 mg/ml (Please refer to the vial label for the specific concentration.)
Immunogen	Synthetic peptide corresponding to residues M(1) S A T A A T V P P A A P A G E G G(18) C of rat VAMP-2.
Purification	Purified by antigen-affinity chromatography
Conjugation	Unconjugated

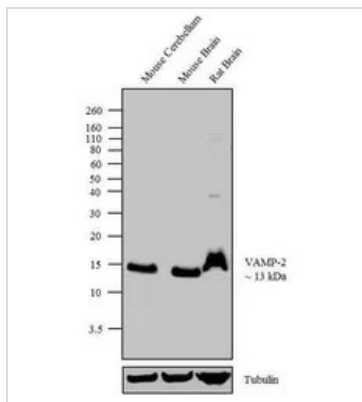
Note

For laboratory research use only. Not for any clinical, therapeutic, or diagnostic use in humans or animals. Not for animal or human consumption.

Purchasers shall not, and agree not to enable third parties to, analyze, copy, reverse engineer or otherwise attempt to determine the structure or sequence of the product.

For full product information, images and publications, please visit our [website](#).

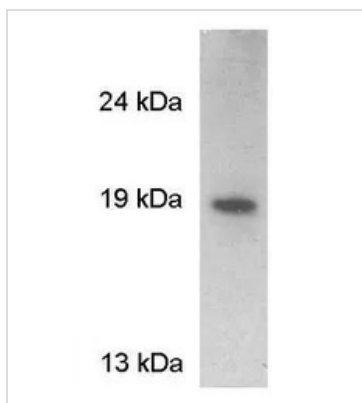
DATA IMAGES



GTX23347 WB Image

WB analysis of tissues (40 µg lysate) of mouse cerebellum (Lane 1), mouse Brain (Lane 2) and rat brain (Lane 3) using GTX23347 VAMP2 antibody.

Dilution : 0.1-1 µg/ml



GTX23347 WB Image

WB analysis of rat brain extract using GTX23347 VAMP2 antibody.



For full product information, images and publications, please visit our [website](https://www.genetex.com).