

P Glycoprotein antibody [C219]

Cat. No. GTX23364

| | |
|---------------------|---|
| Host | Mouse |
| Clonality | Monoclonal |
| Isotype | IgG1 |
| Applications | WB, ICC/IF, IHC-P, IHC-Fr, FCM, IP, ELISA, IHC |
| Reactivity | Human, Mouse, Rat, Zebrafish, Bovine, Dog, Carp |

References (46)

Package

250 µl

Applications

Application Note

*Optimal dilutions/concentrations should be determined by the researcher.

| Suggested dilution | Recommended dilution |
|--------------------|----------------------|
| WB | 1:50-1:500 |
| ICC/IF | Assay dependent |
| IHC-P | ≥1:25 |
| IHC-Fr | Assay dependent |
| FCM | Assay dependent |
| IP | Assay dependent |
| ELISA | Assay dependent |
| IHC | Assay dependent |

Note : Recommend using 1% milk in TBST as blocking buffer.**Permeabilization step is needed.**

Not tested in other applications.

| | |
|--------------------------|-----------------------------------|
| Calculated MW | 141 kDa. (Note) |
| Observed MW (kDa) | ~140kDa, ~170kDa kDa. |

Product Note

Recognizes an internal, highly conserved amino acid sequence (VQEALD and VQAALD) found in both protein isoforms, P-glycoprotein and MDR3 P-glycoprotein. Specific reactivity to human, mouse, rat, dog and primate. Detects bands of ~170kDa (MDR1 P-glycoprotein) and of ~140kDa (MDR3 P-glycoprotein) by Western blot.

Properties

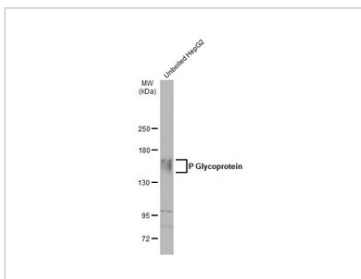
| | |
|---------------------|-------------------|
| Form | Liquid |
| Buffer | PBS, 1% BSA |
| Preservative | 0.1% Sodium azide |



For full product information, images and publications, please visit our [website](#).

| | |
|----------------------|--|
| Storage | Store as concentrated solution. Centrifuge briefly prior to opening vial. For short-term storage (1-2 weeks), store at 4°C. For long-term storage, aliquot and store at -20°C or below. Avoid multiple freeze-thaw cycles. |
| Concentration | Batch dependent (Please refer to the vial label for the specific concentration.) |
| Immunogen | SDS-solubilized plasma membranes of a multidrug resistant Chinese hamster ovary (CHO) cell line and a human cell line. |
| Purification | Purified |
| Conjugation | Unconjugated |
| Note | For laboratory research use only. Not for any clinical, therapeutic, or diagnostic use in humans or animals. Not for animal or human consumption. Purchasers shall not, and agree not to enable third parties to, analyze, copy, reverse engineer or otherwise attempt to determine the structure or sequence of the product. |

DATA IMAGES



GTX23364 WB Image

Whole cell extract (30 µg) was separated by 5% SDS-PAGE, and the membrane was blotted with P Glycoprotein antibody [C219] (GTX23364) diluted at 1:500. The HRP-conjugated anti-mouse IgG antibody (GTX213111-01) was used to detect the primary antibody, and the signal was developed with Trident ECL plus-Enhanced.



For full product information, images and publications, please visit our [website](#).