

## P Glycoprotein antibody [C219]

Cat. No. GTX23364

<b>Host</b>	Mouse
<b>Clonality</b>	Monoclonal
<b>Isotype</b>	IgG1
<b>Applications</b>	WB, ICC/IF, IHC-P, IHC-Fr, FCM, IP, ELISA, IHC
<b>Reactivity</b>	Human, Mouse, Rat, Zebrafish, Bovine, Dog, Carp

References ( 41 )

Package

250 µl

## Applications

## Application Note

\*Optimal dilutions/concentrations should be determined by the researcher.

Suggested dilution	Recommended dilution
WB	1:50-1:500
ICC/IF	Assay dependent
IHC-P	≥ 1:25
IHC-Fr	Assay dependent
FCM	Assay dependent
IP	Assay dependent
ELISA	Assay dependent
IHC	Assay dependent

**Note : Recommend using 1% milk in TBST as blocking buffer.****Cell permeabilization required.**

Not tested in other applications.

<b>Calculated MW</b>	141 kDa. ( <a href="#">Note</a> )
<b>Observed MW (kDa)</b>	~140kDa, ~170kDa kDa.

## Product Note

Recognizes an internal, highly conserved amino acid sequence (VQEALD and VQAALD) found in both protein isoforms, P-glycoprotein and MDR3 P-glycoprotein. Specific reactivity to human, mouse, rat, dog and primate. Detects bands of ~170kDa (MDR1 P-glycoprotein) and of ~140kDa (MDR3 P-glycoprotein) by Western blot.

## Properties

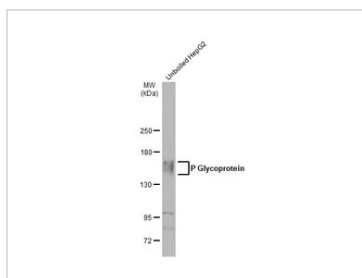
<b>Form</b>	Liquid
<b>Buffer</b>	PBS, 1% BSA
<b>Preservative</b>	0.1% Sodium azide



For full product information, images and publications, please visit our [website](#).

<b>Storage</b>	Store as concentrated solution. Centrifuge briefly prior to opening vial. For short-term storage (1-2 weeks), store at 4°C. For long-term storage, aliquot and store at -20°C or below. Avoid multiple freeze-thaw cycles.
<b>Concentration</b>	Batch dependent (Please refer to the vial label for the specific concentration.)
<b>Immunogen</b>	SDS-solubilized plasma membranes of a multidrug resistant Chinese hamster ovary (CHO) cell line and a human cell line.
<b>Purification</b>	Purified
<b>Conjugation</b>	Unconjugated
<b>Note</b>	<p>For laboratory research use only. Not for any clinical, therapeutic, or diagnostic use in humans or animals. Not for animal or human consumption.</p> <p>Purchasers shall not, and agree not to enable third parties to, analyze, copy, reverse engineer or otherwise attempt to determine the structure or sequence of the product.</p>

## DATA IMAGES



### GTX23364 WB Image

Whole cell extract (30 µg) was separated by 5% SDS-PAGE, and the membrane was blotted with P Glycoprotein antibody [C219] (GTX23364) diluted at 1:500. The HRP-conjugated anti-mouse IgG antibody (GTX213111-01) was used to detect the primary antibody, and the signal was developed with Trident ECL plus-Enhanced.



For full product information, images and publications, please visit our [website](#).