

P Glycoprotein antibody [C219]

Cat. No. GTX23364

Host	Mouse
Clonality	Monoclonal
Isotype	IgG1
Applications	WB, ICC/IF, IHC-P, IHC-Fr, FCM, IP, ELISA, IHC
Reactivity	Human, Mouse, Rat, Zebrafish, Bovine, Dog, Carp

References (46)

Package

250 µl

Applications

Application Note

*Optimal dilutions/concentrations should be determined by the researcher.

Suggested dilution	Recommended dilution
WB	1:50-1:500
ICC/IF	Assay dependent
IHC-P	≥1:25
IHC-Fr	Assay dependent
FCM	Assay dependent
IP	Assay dependent
ELISA	Assay dependent
IHC	Assay dependent

Note : Recommend using 1% milk in TBST as blocking buffer.

Permeabilization step is needed.

Not tested in other applications.

Calculated MW	141 kDa. (Note)
Observed MW (kDa)	~140kDa, ~170kDa kDa.

Product Note

Recognizes an internal, highly conserved amino acid sequence (VQEALD and VQAALD) found in both protein isoforms, P-glycoprotein and MDR3 P-glycoprotein. Specific reactivity to human, mouse, rat, dog and primate. Detects bands of ~170kDa (MDR1 P-glycoprotein) and of ~140kDa (MDR3 P-glycoprotein) by Western blot.

Properties

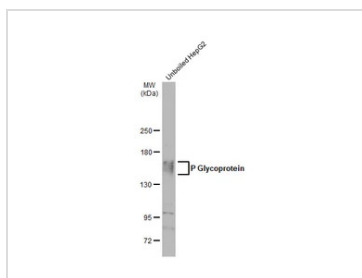
Form	Liquid
Buffer	PBS, 1% BSA
Preservative	0.1% Sodium azide



For full product information, images and publications, please visit our [website](#).

Storage	Store as concentrated solution. Centrifuge briefly prior to opening vial. For short-term storage (1-2 weeks), store at 4°C. For long-term storage, aliquot and store at -20°C or below. Avoid multiple freeze-thaw cycles.
Concentration	Batch dependent (Please refer to the vial label for the specific concentration.)
Immunogen	SDS-solubilized plasma membranes of a multidrug resistant Chinese hamster ovary (CHO) cell line and a human cell line.
Purification	Purified
Conjugation	Unconjugated
Note	For laboratory research use only. Not for any clinical, therapeutic, or diagnostic use in humans or animals. Not for animal or human consumption. Purchasers shall not, and agree not to enable third parties to, analyze, copy, reverse engineer or otherwise attempt to determine the structure or sequence of the product.

DATA IMAGES



GTX23364 WB Image

Whole cell extract (30 µg) was separated by 5% SDS-PAGE, and the membrane was blotted with P Glycoprotein antibody [C219] (GTX23364) diluted at 1:500. The HRP-conjugated anti-mouse IgG antibody (GTX213111-01) was used to detect the primary antibody, and the signal was developed with Trident ECL plus-Enhanced.



For full product information, images and publications, please visit our [website](#).