

## AU1 tag antibody

Cat. No. GTX23400

|              |                            |
|--------------|----------------------------|
| Host         | Goat                       |
| Clonality    | Polyclonal                 |
| Isotype      | IgG                        |
| Applications | WB, ICC/IF, IP, ELISA, IHC |
| Reactivity   | Species independent        |

Package  
100 µg

## Applications

## Application Note

\*Optimal dilutions/concentrations should be determined by the researcher.

| Suggested dilution | Recommended dilution                                 |
|--------------------|--|
| WB                 | 1:100-1:500  |
| ICC/IF             | 1:100-1:400  |
| IP                 | 1-4µg antibody/mg lysate                             |
| ELISA              | 1:1,000-1:30,000 (Detection) ; 1:100-1:500 (Coating) |
| IHC                | Assay dependent                                      |

Not tested in other applications.

## Properties

|               |   |
|---------------|---|
| Form          | Liquid  |
| Buffer        | PBS   |
| Preservative  | 0.09% Sodium azide  |
| Storage       | Store as concentrated solution. Centrifuge briefly prior to opening vial. Store at 4°C. |
| Concentration | 1 mg/ml (Please refer to the vial label for the specific concentration.)                |
| Immunogen     | AU1 (DTYRYI) conjugated to KLH.   |
| Purification  | Purified by antigen-affinity chromatography   |
| Conjugation   | Unconjugated  |

## Note

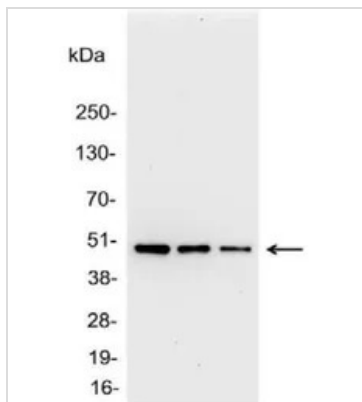
For laboratory research use only. Not for any clinical, therapeutic, or diagnostic use in humans or animals. Not for animal or human consumption.

Purchasers shall not, and agree not to enable third parties to, analyze, copy, reverse engineer or otherwise attempt to determine the structure or sequence of the product.



For full product information, images and publications, please visit our [website](#).

## DATA IMAGES



### GTX23400 WB Image

WB analysis of 200, 100, and 50ng of E. coli lysate containing tagged fusion protein using GTX23400 AU1 tag antibody.

Dilution : 1:5000



For full product information, images and publications, please visit our [website](#).