

## PMP70 antibody

**Cat. No. GTX23421**

<b>Host</b>	Rabbit
<b>Clonality</b>	Polyclonal
<b>Isotype</b>	IgG
<b>Applications</b>	WB, ICC/IF, FCM, IHC
<b>Reactivity</b>	Human, Mouse, Rat, Hamster

**Package**  
100 µg

## Applications

**Application Note**

\*Optimal dilutions/concentrations should be determined by the researcher.

Suggested dilution	Recommended dilution
WB	1:500
ICC/IF	1-10 µg/ml
FCM	0.5 µg/test
IHC	Assay dependent

Not tested in other applications.

**Calculated MW** 75 kDa. ([Note](#))

## Properties

<b>Form</b>	Liquid
<b>Buffer</b>	PBS, 0.1% BSA
<b>Preservative</b>	0.05% Sodium azide
<b>Storage</b>	Store as concentrated solution. Centrifuge briefly prior to opening vial. For short-term storage (1-2 weeks), store at 4°C. For long-term storage, aliquot and store at -20°C or below. Avoid multiple freeze-thaw cycles.
<b>Concentration</b>	1 mg/ml (Please refer to the vial label for the specific concentration.)
<b>Immunogen</b>	Synthetic Peptide: C N(644) Y E F K K I T E D T V E F G S(659)
<b>Purification</b>	Purified by antigen-affinity chromatography
<b>Conjugation</b>	Unconjugated

**Note**

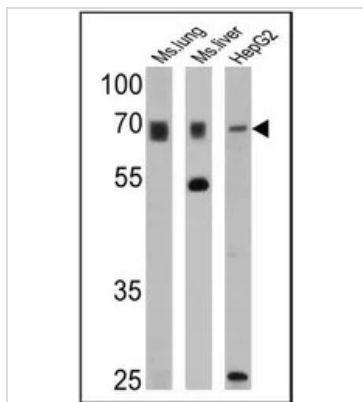
For laboratory research use only. Not for any clinical, therapeutic, or diagnostic use in humans or animals. Not for animal or human consumption.

Purchasers shall not, and agree not to enable third parties to, analyze, copy, reverse engineer or otherwise attempt to determine the structure or sequence of the product.



For full product information, images and publications, please visit our [website](#).

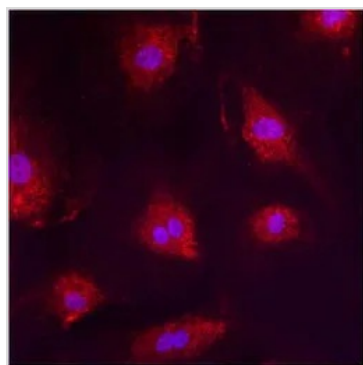
DATA IMAGES



**GTX23421 WB Image**

WB analysis of 25 ug of mouse lung (lane 1), mouse liver (lane 2) and HepG2 (lane 3) cell lysates using GTX23421 PMP70 antibody.

Dilution : 1:1000

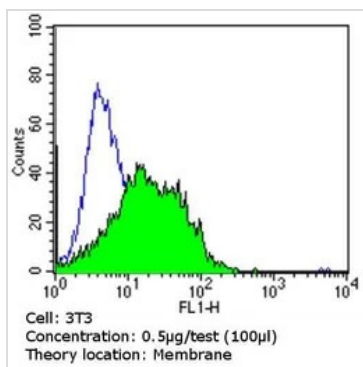


**GTX23421 ICC/IF Image**

ICC/IF analysis of HMVEC Cells using GTX23421 PMP70 antibody.

Red : Primary antibody

Blue : Nuclei



**GTX23421 FCM Image**

FACS analysis of NIH-3T3 cells using GTX23421 PMP70 antibody compared to an isotype control (blue).

Dilution : 0.5 ug/test for 60 min at room temperature

Fixation : 2% paraformaldehyde



For full product information, images and publications, please visit our [website](#).