

## S-arrestin antibody

**Cat. No. GTX23435**

<b>Host</b>	Rabbit
<b>Clonality</b>	Polyclonal
<b>Isotype</b>	IgG
<b>Applications</b>	WB, ICC/IF, IHC
<b>Reactivity</b>	Human, Mouse, Sheep, Bovine

**Package**  
200 µg

## Applications

**Application Note**

\*Optimal dilutions/concentrations should be determined by the researcher.

Suggested dilution	Recommended dilution
WB	2 µg/ml
ICC/IF	1:1000
IHC	Assay dependent

Not tested in other applications.

**Calculated MW** 45 kDa. ([Note](#))

**Product Note**

This antibody detects an ~57 kDa protein representing recombinant bovine and sheep visual arrestin. This antibody also detects a lower molecular weight protein which could correspond to degradation product.

## Properties

<b>Form</b>	Liquid
<b>Buffer</b>	PBS, 0.1% BSA
<b>Preservative</b>	0.05% Sodium azide
<b>Storage</b>	Store as concentrated solution. Centrifuge briefly prior to opening vial. For short-term storage (1-2 weeks), store at 4°C. For long-term storage, aliquot and store at -20°C or below. Avoid multiple freeze-thaw cycles.
<b>Concentration</b>	1 mg/ml (Please refer to the vial label for the specific concentration.)
<b>Immunogen</b>	Synthetic Peptide: C E(347) V A T E V P F R L M H P Q P E D(363)
<b>Purification</b>	Purified by antigen-affinity chromatography
<b>Conjugation</b>	Unconjugated



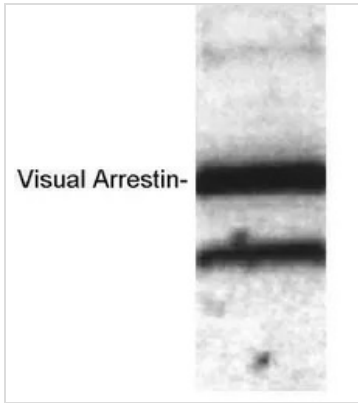
For full product information, images and publications, please visit our [website](#).

For laboratory research use only. Not for any clinical, therapeutic, or diagnostic use in humans or animals. Not for animal or human consumption.

**Note**

Purchasers shall not, and agree not to enable third parties to, analyze, copy, reverse engineer or otherwise attempt to determine the structure or sequence of the product.

## DATA IMAGES

**GTX23435 WB Image**

WB analysis of recombinant bovine visual arrestin using GTX23435 S-arrestin antibody.



For full product information, images and publications, please visit our [website](#).