

SAP97 antibody

Cat. No. GTX23437

Host	Rabbit
Clonality	Polyclonal
Isotype	IgG
Applications	WB, ICC/IF, IHC-Fr, IP, IHC
Reactivity	Human, Mouse, Rat

Package
100 µl

Applications

Application Note

*Optimal dilutions/concentrations should be determined by the researcher.

Suggested dilution	Recommended dilution
WB	1:500-1:5000
ICC/IF	1:250
IHC-Fr	1:1,000
IP	Assay dependent
IHC	Assay dependent

Not tested in other applications.

Calculated MW 100 kDa. ([Note](#))

Product Note This antibody detects Synapse-Associated Protein 97 (SAP97) from human, rat and mouse tissues. No cross-reactivity to other proteins, including synapse-associated protein family members, has been observed.

Properties

Form	Liquid
Buffer	PBS
Preservative	0.05% Sodium azide
Storage	Store as concentrated solution. Centrifuge briefly prior to opening vial. For short-term storage (1-2 weeks), store at 4°C. For long-term storage, aliquot and store at -20°C or below. Avoid multiple freeze-thaw cycles.
Concentration	Batch dependent (Please refer to the vial label for the specific concentration.)
Immunogen	Synthetic peptide corresponding to residues V(115) L P S E R I S P Q V P N E V L G P E(133) of rat SAP97.
Purification	Ammonium sulfate precipitation
Conjugation	Unconjugated



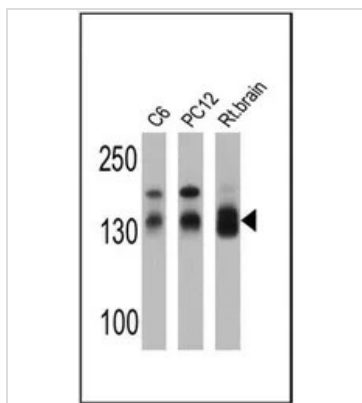
For full product information, images and publications, please visit our [website](#).

For laboratory research use only. Not for any clinical, therapeutic, or diagnostic use in humans or animals. Not for animal or human consumption.

Note

Purchasers shall not, and agree not to enable third parties to, analyze, copy, reverse engineer or otherwise attempt to determine the structure or sequence of the product.

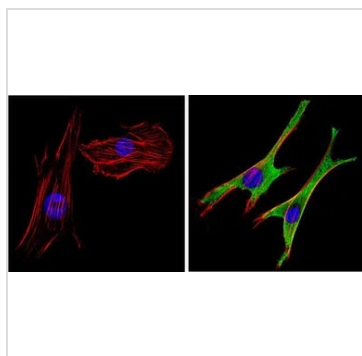
DATA IMAGES



GTX23437 WB Image

WB analysis of 25 ug of C6 (lane 1), PC12 (lane 2) and rat brain (lane 3) cell lysates using GTX23437 SAP97 antibody.

Dilution : 1:5000



GTX23437 ICC/IF Image

ICC/IF analysis of NIH-3T3 cells using GTX23437 SAP97 antibody. Cells were probed without (left) or with(right) an antibody.

Green : Primary antibody

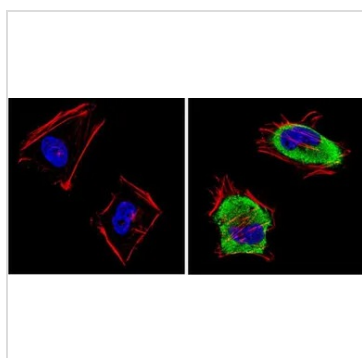
Blue : Nuclei

Red : Actin

Fixation : Formalin

Permeabilization : 0.1% Triton X-100 in TBS for 5-10 minute

Dilution : 1:100 incubated overnight at 4 °C



GTX23437 ICC/IF Image

ICC/IF analysis of HeLa cells using GTX23437 SAP97 antibody. Cells were probed without (left) or with(right) an antibody.

Green : Primary antibody

Blue : Nuclei

Red : Actin

Fixation : Formalin

Permeabilization : 0.1% Triton X-100 in TBS for 5-10 minute

Dilution : 1:100 incubated overnight at 4 °C



For full product information, images and publications, please visit our [website](#).