

SAP102 antibody

Cat. No. GTX23438

Host	Rabbit
Clonality	Polyclonal
Isotype	IgG
Applications	WB, ICC/IF, IHC-Fr
Reactivity	Mouse, Rat

Package
100 µg

Applications

Application Note

*Optimal dilutions/concentrations should be determined by the researcher.

Suggested dilution	Recommended dilution
WB	3 µg/ml
ICC/IF	Assay dependent
IHC-Fr	10 µg/ml

Not tested in other applications.

Calculated MW 94 kDa. ([Note](#))

Properties

Form	Liquid
Buffer	PBS, 0.1% BSA
Preservative	0.05% Sodium azide
Storage	Store as concentrated solution. Centrifuge briefly prior to opening vial. For short-term storage (1-2 weeks), store at 4°C. For long-term storage, aliquot and store at -20°C or below. Avoid multiple freeze-thaw cycles.
Concentration	1 mg/ml (Please refer to the vial label for the specific concentration.)
Immunogen	Synthetic peptide corresponding to residues G(83) P V P P K P V P G K N T P K L N G(100) of rat SAP102.
Purification	Purified by antigen-affinity chromatography
Conjugation	Unconjugated

Note

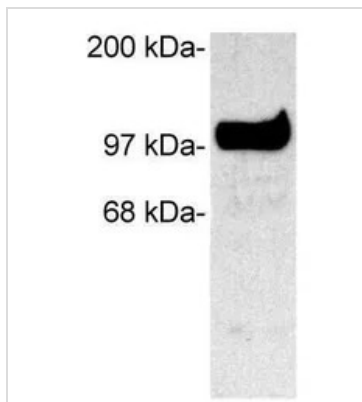
For laboratory research use only. Not for any clinical, therapeutic, or diagnostic use in humans or animals. Not for animal or human consumption.

Purchasers shall not, and agree not to enable third parties to, analyze, copy, reverse engineer or otherwise attempt to determine the structure or sequence of the product.



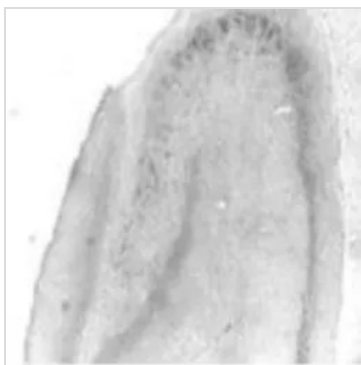
For full product information, images and publications, please visit our [website](#).

DATA IMAGES



GTX23438 WB Image

WB analysis of COS cells transfected with rat SAP102 using GTX23438 SAP102 antibody.



GTX23438 IHC-Fr Image

IHC-Fr analysis of Ammon's Horn and the dentate gyrus of the rat hippocampus tissue using GTX23438 SAP102 antibody.



For full product information, images and publications, please visit our [website](#).