

## NFAT5 antibody

Cat. No. GTX23446

<b>Host</b>	Rabbit
<b>Clonality</b>	Polyclonal
<b>Isotype</b>	IgG
<b>Applications</b>	WB, ICC/IF, IHC-P, IP, ChIP assay, Gel supershift assays, IHC
<b>Reactivity</b>	Human, Mouse, Rat, Rabbit, Monkey

References ( 1 )  
 Package  
 50 µg

## Applications

## Application Note

\*Optimal dilutions/concentrations should be determined by the researcher.

Suggested dilution	Recommended dilution
WB	1:1,000
ICC/IF	1:100-1:1000
IHC-P	1:20
IP	3 µg
ChIP assay	Assay dependent
Gel supershift assays	Assay dependent
IHC	Assay dependent

Not tested in other applications.

**Calculated MW** 166 kDa. ([Note](#))

## Properties

<b>Form</b>	Liquid
<b>Buffer</b>	PBS, 0.1% BSA
<b>Preservative</b>	0.05% Sodium azide
<b>Storage</b>	Store as concentrated solution. Centrifuge briefly prior to opening vial. For short-term storage (1-2 weeks), store at 4°C. For long-term storage, aliquot and store at -20°C or below. Avoid multiple freeze-thaw cycles.
<b>Concentration</b>	1 mg/ml (Please refer to the vial label for the specific concentration.)
<b>Immunogen</b>	Synthetic peptide corresponding to residues C D(1439) L L V S L Q N Q G N N L T G S F(1455) of human NFAT5.
<b>Purification</b>	Purified by antigen-affinity chromatography
<b>Conjugation</b>	Unconjugated

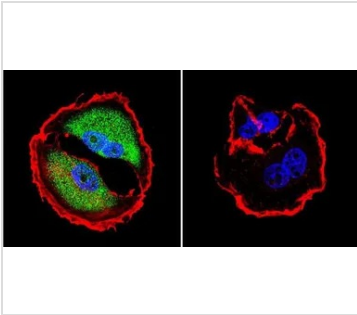


For full product information, images and publications, please visit our [website](#).

For laboratory research use only. Not for any clinical, therapeutic, or diagnostic use in humans or animals. Not for animal or human consumption.

**Note**  
Purchasers shall not, and agree not to enable third parties to, analyze, copy, reverse engineer or otherwise attempt to determine the structure or sequence of the product.

## DATA IMAGES

**GTX23446 ICC/IF Image**

ICC/IF analysis of MCF-7 cells using GTX23446 NFAT5 antibody. Cells were probed without (right) or with(left) an antibody.

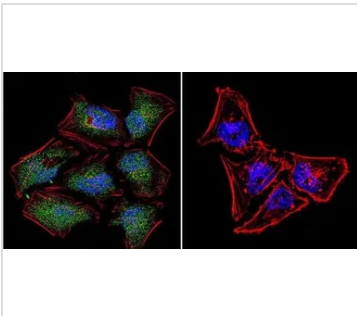
Green : Primary antibody

Blue : Nuclei

Red : Actin

Fixation : formaldehyde

Dilution : 1:200 overnight at 4°C

**GTX23446 ICC/IF Image**

ICC/IF analysis of HeLa cells using GTX23446 NFAT5 antibody. Cells were probed without (right) or with(left) an antibody.

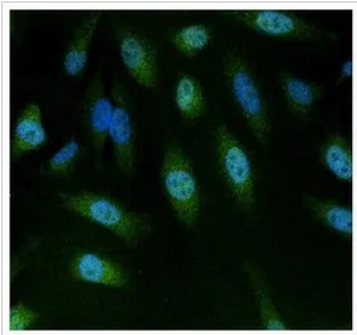
Green : Primary antibody

Blue : Nuclei

Red : Actin

Fixation : formaldehyde

Dilution : 1:20 overnight at 4°C

**GTX23446 ICC/IF Image**

ICC/IF analysis of HeLa cells using GTX23446 NFAT5 antibody.

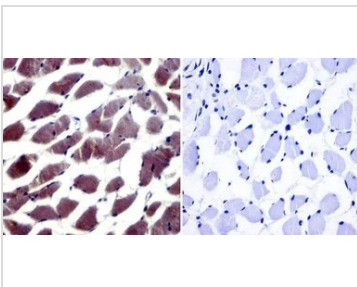
Green : Primary antibody

Blue : Nuclei

Fixation : Formalin

Permeabilization : 0.1% Triton X-100 in TBS for 10 minutes

Dilution : 1:100 for at least 1 hour at room temperature

**GTX23446 IHC-P Image**

IHC-P analysis of human skeletal muscle tissue using GTX23446 NFAT5 antibody.

Left : Primary antibody

Right : Negative control without primary antibody

Antigen retrieval : heat induced antigen retrieval was performed using 10mM sodium citrate (pH6.0) buffer, microwaved for 8-15 minutes

Dilution : 1:20



For full product information, images and publications, please visit our [website](#).