

## NFATC4 antibody

Cat. No. GTX23447

<b>Host</b>	Rabbit
<b>Clonality</b>	Polyclonal
<b>Isotype</b>	IgG
<b>Applications</b>	WB, ICC/IF, IP, IHC
<b>Reactivity</b>	Human, Mouse

**Package**  
100 µg

## Applications

## Application Note

\*Optimal dilutions/concentrations should be determined by the researcher.

Suggested dilution	Recommended dilution
WB	1:1000
ICC/IF	1:100
IP	3 µg
IHC	1:3000

Not tested in other applications.

**Calculated MW** 95 kDa. ( [Note](#) )

## Properties

<b>Form</b>	Liquid
<b>Buffer</b>	PBS, 0.1% BSA
<b>Preservative</b>	0.05% Sodium azide
<b>Storage</b>	Store as concentrated solution. Centrifuge briefly prior to opening vial. For short-term storage (1-2 weeks), store at 4°C. For long-term storage, aliquot and store at -20°C or below. Avoid multiple freeze-thaw cycles.
<b>Concentration</b>	1 mg/ml (Please refer to the vial label for the specific concentration.)
<b>Immunogen</b>	Synthetic peptide corresponding to residues C R(887) D L S G F P A P P G E E P P A(902) of human NFAT3.
<b>Purification</b>	Purified by antigen-affinity chromatography
<b>Conjugation</b>	Unconjugated

## Note

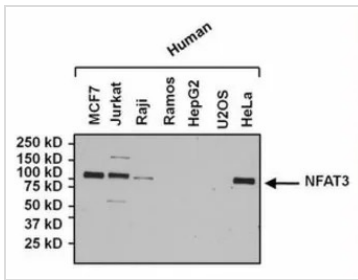
For laboratory research use only. Not for any clinical, therapeutic, or diagnostic use in humans or animals. Not for animal or human consumption.

Purchasers shall not, and agree not to enable third parties to, analyze, copy, reverse engineer or otherwise attempt to determine the structure or sequence of the product.



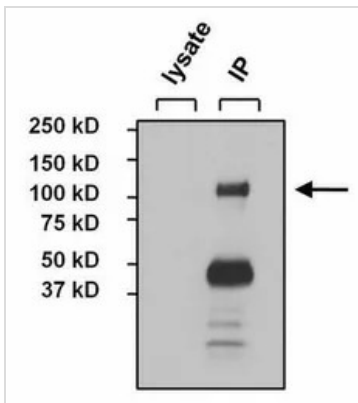
For full product information, images and publications, please visit our [website](#).

## DATA IMAGES



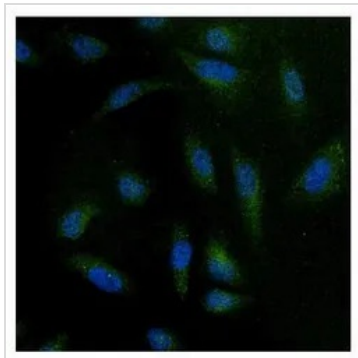
### GTX23447 WB Image

WB analysis of 25 ug of various whole cell lysates using GTX23447 NFATC4 antibody.  
Dilution : 1:1000



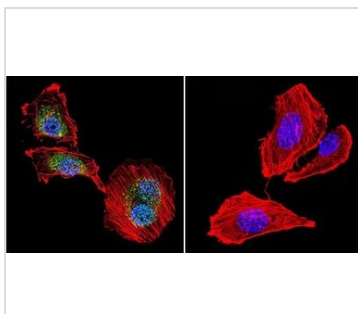
### GTX23447 IP Image

IP analysis of MCF7 cell lysates using GTX23447 NFATC4 antibody.  
IP reaction : 3µg antibody / 500µg lysate



### GTX23447 ICC/IF Image

ICC/IF analysis of HeLa cells using GTX23447 NFATC4 antibody.  
Green : Primary antibody  
Blue : Nuclei  
Fixation : Formalin  
Permeabilization : 0.1% Triton X-100 in TBS for 10 minutes  
Dilution : 1:100 for at least 1 hour at room temperature



### GTX23447 ICC/IF Image

ICC/IF analysis of U251 cells using GTX23447 NFATC4 antibody. Cells were probed without (right) or with (left) an antibody.  
Green : Primary antibody  
Blue : Nuclei  
Red : Actin  
Fixation : formaldehyde  
Dilution : 1:20 overnight at 4°C



For full product information, images and publications, please visit our [website](https://www.genetex.com).