

## Adiponectin antibody

Cat. No. GTX23455

Host	Rabbit
Clonality	Polyclonal
Isotype	IgG
Applications	WB, ICC/IF, IHC-P, IP, IHC
Reactivity	Human, Mouse

References ( 5 )

Package

200 µg

## Applications

## Application Note

\*Optimal dilutions/concentrations should be determined by the researcher.

Suggested dilution	Recommended dilution
WB	2 µg/ml
ICC/IF	2 µg/ml
IHC-P	Assay dependent
IP	Assay dependent
IHC	Assay dependent

Not tested in other applications.

Calculated MW 27 kDa. ( [Note](#) )

## Properties

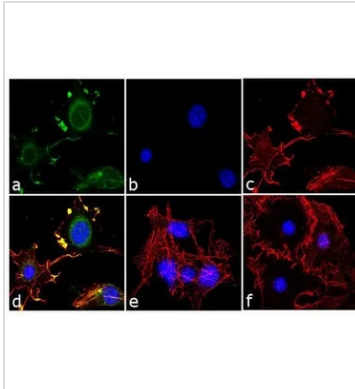
Form	Liquid
Buffer	PBS, 0.1% BSA
Preservative	0.05% Sodium azide
Storage	Store as concentrated solution. Centrifuge briefly prior to opening vial. For short-term storage (1-2 weeks), store at 4°C. For long-term storage, aliquot and store at -20°C or below. Avoid multiple freeze-thaw cycles.
Concentration	1 mg/ml (Please refer to the vial label for the specific concentration.)
Immunogen	Synthetic peptides corresponding to the residues E(18) D D V T T T E E L A P A L V(32) and F(187) T Y D Q Y Q E K N V D Q A(200) of mouse Adiponectin.
Purification	Protein A purified
Conjugation	Unconjugated

For full product information, images and publications, please visit our [website](#).

For laboratory research use only. Not for any clinical, therapeutic, or diagnostic use in humans or animals. Not for animal or human consumption.

**Note**

Purchasers shall not, and agree not to enable third parties to, analyze, copy, reverse engineer or otherwise attempt to determine the structure or sequence of the product.

**DATA IMAGES**

**GTXT23455 ICC/IF Image**

ICC/IF analysis of 3T3-L1 cells differentiated with Adipogenesis Supplement using GTXT23455 Adiponectin antibody. Panel e is untreated cell with no signal. Panel f represents control cells with no primary antibody to assess background.

Green : Primary antibody

Blue : Nuclei

Red : Actin

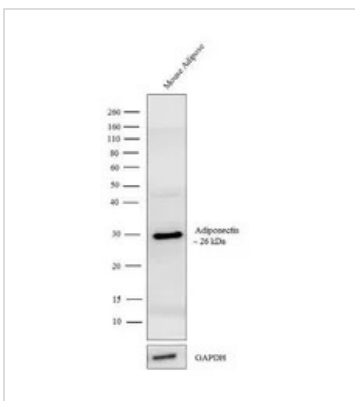
Fixation : 4% paraformaldehyde

Permeabilization : 0.1% Triton X-100 for 10 minute

Dilution : 2 µg/ml in 0.1% BSA and incubated for 3 hours at room temperature


**GTXT23455 WB Image**

WB analysis of mouse serum using GTXT23455 Adiponectin antibody.


**GTXT23455 WB Image**

WB analysis of tissue extract (30 ug lysate) of mouse adipose using GTXT23455 Adiponectin antibody.

Dilution : 2 µg/ml



For full product information, images and publications, please visit our [website](https://www.genetex.com).