

Adenosine A1 Receptor antibody

Cat. No. GTX23460

Host	Rabbit
Clonality	Polyclonal
Isotype	IgG
Applications	WB, ICC/IF, IHC-P, FCM, IHC
Reactivity	Human, Mouse, Rat

References (1)

Package

100 µl

Applications

Application Note

*Optimal dilutions/concentrations should be determined by the researcher.

Suggested dilution	Recommended dilution
WB	1:500
ICC/IF	2µg/ml
IHC-P	1:50-1:200
FCM	3-5 µg/10 ⁶ cells
IHC	Assay dependent

Not tested in other applications.

Calculated MW 37 kDa. ([Note](#))**Product Note** This antibody does not detect other AR subtypes.

Properties

Form	Liquid
Buffer	PBS, 0.1% BSA
Preservative	0.05% Sodium azide
Storage	Store as concentrated solution. Centrifuge briefly prior to opening vial. For short-term storage (1-2 weeks), store at 4°C. For long-term storage, aliquot and store at -20°C or below. Avoid multiple freeze-thaw cycles.
Concentration	1 mg/ml (Please refer to the vial label for the specific concentration.)
Immunogen	Synthetic peptide corresponding to residues C(309) Q P K P P I D E D L P E E K A E D(326) of rat Adenosine Receptor A1.
Purification	Purified by antigen-affinity chromatography
Conjugation	Unconjugated

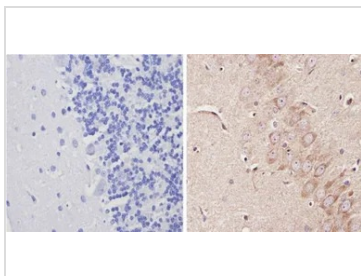


For full product information, images and publications, please visit our [website](#).

For laboratory research use only. Not for any clinical, therapeutic, or diagnostic use in humans or animals. Not for animal or human consumption.

Note

Purchasers shall not, and agree not to enable third parties to, analyze, copy, reverse engineer or otherwise attempt to determine the structure or sequence of the product.

DATA IMAGES

GTX23460 IHC-P Image

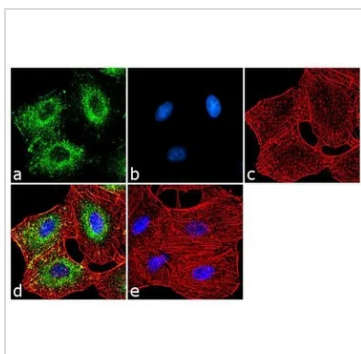
IHC-P analysis of rat brain tissue using GTX23460 Adenosine A1 Receptor antibody.

Right : Primary antibody

Left : Negative control without primary antibody

Antigen retrieval : 10mM sodium citrate (pH 6.0) microwaved for 8-15 min

Dilution : 1:100


GTX23460 ICC/IF Image

ICC/IF analysis of HeLa cells using GTX23460 Adenosine A1 Receptor antibody. Panel e is a no primary antibody control.

Green : Primary antibody

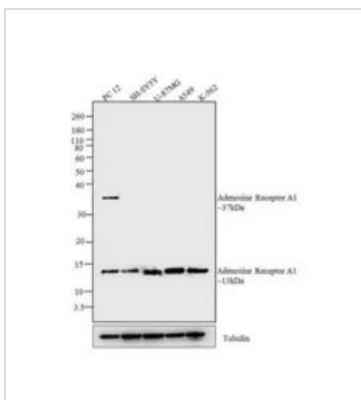
Blue : Nuclei

Red : Actin

Fixation : 4% paraformaldehyde

Permeabilization : 0.1% Triton X-100 for 10 minute

Dilution : 2 µg/ml in 0.1% BSA and incubated for 3 hours at room temperature


GTX23460 WB Image

WB analysis of whole cell extracts (30 µg lysate) of PC 12 (Lane 1), SH-SY5Y (lane 2), U-87MG (lane 3), A549 (Lane 4) and K-562 (lane 5) using GTX23460 Adenosine A1 Receptor antibody.

Dilution : 1:250-1:1000



For full product information, images and publications, please visit our [website](https://www.genetex.com).