

CPEB1 antibody

Cat. No. GTX23465

Host	Rabbit
Clonality	Polyclonal
Isotype	IgG
Applications	WB, ICC/IF, IHC-P, IP
Reactivity	Human, Mouse, Rat

Package
100 µg

Applications

Application Note

*Optimal dilutions/concentrations should be determined by the researcher.

Suggested dilution	Recommended dilution
WB	1:100-1:1000
ICC/IF	1:50-1:500
IHC-P	1:50-1:500
IP	Assay dependent

Not tested in other applications.

Calculated MW 62 kDa. ([Note](#))

Properties

Form	Liquid
Buffer	PBS, 0.1% BSA
Preservative	0.05% Sodium azide
Storage	Store as concentrated solution. Centrifuge briefly prior to opening vial. For short-term storage (1-2 weeks), store at 4°C. For long-term storage, aliquot and store at -20°C or below. Avoid multiple freeze-thaw cycles.
Concentration	1 mg/ml (Please refer to the vial label for the specific concentration.)
Immunogen	Synthetic peptide corresponding to residues C H(545) S M E G L R H H S P L M R N Q K N(562) of human CPEB.
Purification	Purified by antigen-affinity chromatography
Conjugation	Unconjugated

Note

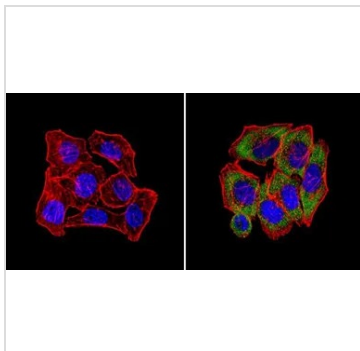
For laboratory research use only. Not for any clinical, therapeutic, or diagnostic use in humans or animals. Not for animal or human consumption.

Purchasers shall not, and agree not to enable third parties to, analyze, copy, reverse engineer or otherwise attempt to determine the structure or sequence of the product.



For full product information, images and publications, please visit our [website](#).

DATA IMAGES



GTX23465 ICC/IF Image

ICC/IF analysis of U251 cells using GTX23465 CPEB1 antibody. Cells were probed without (left) or with(right) an antibody.

Green : Primary antibody

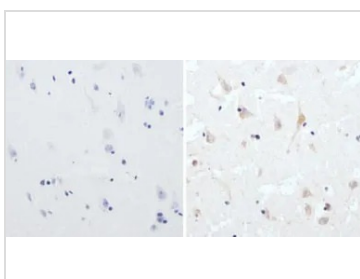
Blue : Nuclei

Red : Actin

Fixation : Formalin

Permeabilization : 0.1% Triton X-100 in TBS for 5-10 minute

Dilution : 1:100 and incubated overnight at 4°C



GTX23465 IHC-P Image

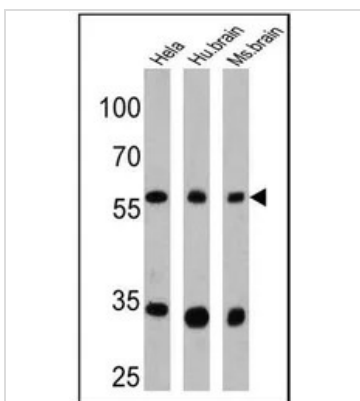
IHC-P analysis of human brain tissue using GTX23465 CPEB1 antibody.

Right : Primary antibody

Left : Negative control without primary antibody

Antigen retrieval : 10mM sodium citrate (pH 6.0), microwaved for 8-15 min

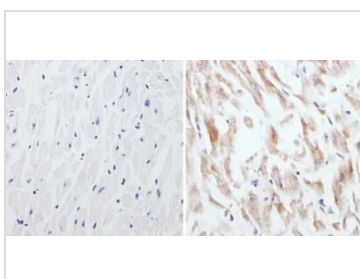
Dilution : 1:100



GTX23465 WB Image

WB analysis of 25 ug of HeLa (lane 1), human brain (lane 2) and mouse brain (lane 3) lysates using GTX23465 CPEB1 antibody.

Dilution : 1:500



GTX23465 IHC-P Image

IHC-P analysis of human heart tissue using GTX23465 CPEB1 antibody.

Right : Primary antibody

Left : Negative control without primary antibody

Antigen retrieval : 10mM sodium citrate (pH 6.0), microwaved for 8-15 min

Dilution : 1:50



For full product information, images and publications, please visit our [website](https://www.genetex.com).