

SIN3A antibody

Cat. No. GTX23479

Host	Rabbit
Clonality	Polyclonal
Isotype	IgG
Applications	WB, ICC/IF, IHC-P, IP, ChIP assay
Reactivity	Human, Mouse, Rat

Package
100 µg

Applications

Application Note

*Optimal dilutions/concentrations should be determined by the researcher.

Suggested dilution	Recommended dilution
WB	0.5 µg/ml
ICC/IF	1:50-1:500
IHC-P	1:50-1:500
IP	Assay dependent
ChIP assay	1-3 µl

Not tested in other applications.

Calculated MW 145 kDa. ([Note](#))

Properties

Form	Liquid
Buffer	PBS, 0.1% BSA
Preservative	0.05% Sodium azide
Storage	Store as concentrated solution. Centrifuge briefly prior to opening vial. For short-term storage (1-2 weeks), store at 4°C. For long-term storage, aliquot and store at -20°C or below. Avoid multiple freeze-thaw cycles.
Concentration	1 mg/ml (Please refer to the vial label for the specific concentration.)
Immunogen	Synthetic peptide corresponding to residues M(1) K R R L D D Q E S D V Y A A Q Q R R(19) of mouse mSin3A.
Purification	Purified by antigen-affinity chromatography
Conjugation	Unconjugated

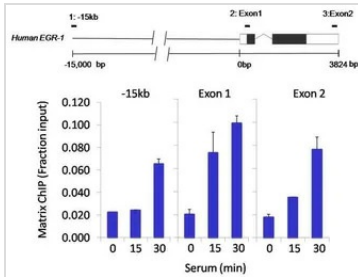


For full product information, images and publications, please visit our [website](#).

For laboratory research use only. Not for any clinical, therapeutic, or diagnostic use in humans or animals. Not for animal or human consumption.

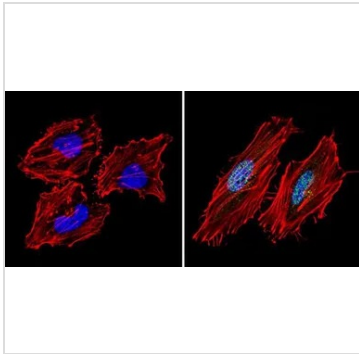
Note

Purchasers shall not, and agree not to enable third parties to, analyze, copy, reverse engineer or otherwise attempt to determine the structure or sequence of the product.

DATA IMAGES

GTx23479 ChIP assay Image

ChIP analysis of 1×10^6 HCT116 colon carcinoma cells treated with serum for 0, 15, and 30 minutes using GTx23479 SIN3A antibody. Immunoprecipitation was performed using a multiplex microplate Matrix ChIP assay (refer to PMID: 22098709). The precipitated DNA was detected by PCR with primer set targeting to -15kb upstream of the Egr1 gene or exon-1 or exon-2 of Egr1.

IP reaction : 1.0ul antibody / 100ul sample


GTx23479 ICC/IF Image

ICC/IF analysis of HeLa cells using GTx23479 SIN3A antibody. Cells were probed without (left) or with(right) an antibody.

Green : Primary antibody

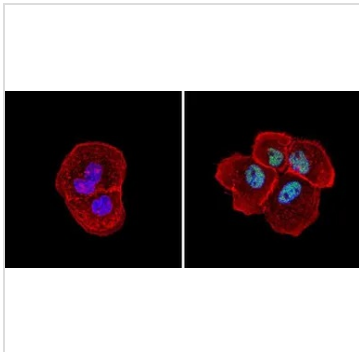
Blue : Nuclei

Red : Actin

Fixation : Formalin

Permeabilization : 0.1% Triton X-100 in TBS for 5-10 minute

Dilution : 1:200 incubated overnight at 4°C


GTx23479 ICC/IF Image

ICC/IF analysis of A431 cells using GTx23479 SIN3A antibody. Cells were probed without (left) or with(right) an antibody.

Green : Primary antibody

Blue : Nuclei

Red : Actin

Fixation : Formalin

Permeabilization : 0.1% Triton X-100 in TBS for 5-10 minute

Dilution : 1:100 and incubated overnight at 4°C



For full product information, images and publications, please visit our [website](http://www.genetex.com).