

# Myosin VIIa antibody

**Cat. No. GTX23481**

<b>Host</b>	Rabbit
<b>Clonality</b>	Polyclonal
<b>Isotype</b>	IgG
<b>Applications</b>	WB, ICC/IF, FCM, IHC
<b>Reactivity</b>	Mouse, Rat

References ( 1 )  
Package  
200 µl

## Applications

### Application Note

\*Optimal dilutions/concentrations should be determined by the researcher.

Suggested dilution	Recommended dilution
WB	3-6 µg/ml
ICC/IF	2 µg/ml
FCM	3-5 µg/10 <sup>6</sup> cells
IHC	Assay dependent

Not tested in other applications.

**Calculated MW** 255 kDa. ( [Note](#) )

## Properties

<b>Form</b>	Liquid
<b>Buffer</b>	PBS, 0.1% BSA
<b>Preservative</b>	0.05% Sodium azide
<b>Storage</b>	Store as concentrated solution. Centrifuge briefly prior to opening vial. For short-term storage (1-2 weeks), store at 4°C. For long-term storage, aliquot and store at -20°C or below. Avoid multiple freeze-thaw cycles.
<b>Concentration</b>	1 mg/ml (Please refer to the vial label for the specific concentration.)
<b>Immunogen</b>	Synthetic Peptide: S(16) G Q E F D V P I G A V V K L C(31)
<b>Purification</b>	Purified by antigen-affinity chromatography
<b>Conjugation</b>	Unconjugated

### Note

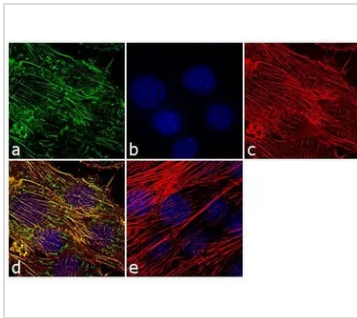
For laboratory research use only. Not for any clinical, therapeutic, or diagnostic use in humans or animals. Not for animal or human consumption.

Purchasers shall not, and agree not to enable third parties to, analyze, copy, reverse engineer or otherwise attempt to determine the structure or sequence of the product.



For full product information, images and publications, please visit our [website](#).

## DATA IMAGES



### GTX23481 ICC/IF Image

ICC/IF analysis of L6 cells using GTX23481 Myosin VIIa antibody. Panel e is a no primary antibody control.

Green : Primary antibody

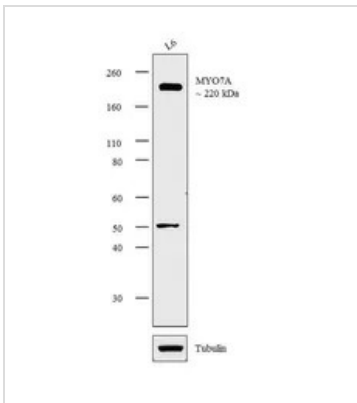
Blue : Nuclei

Red : Actin

Fixation : 4% paraformaldehyde

Permeabilization : 0.1% Triton X-100 for 10 minute

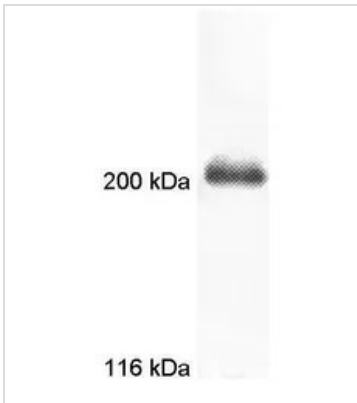
Dilution : 2 µg/ml in 0.1% BSA and incubated for 3 hours at room temperature



### GTX23481 WB Image

WB analysis of membrane-enriched extracts (30 µg lysate) of L6 using GTX23481 Myosin VIIa antibody.

Dilution : 5 µg/ml



### GTX23481 WB Image

WB analysis of mouse testes tissue extract using GTX23481 Myosin VIIa antibody.



For full product information, images and publications, please visit our [website](https://www.genetex.com).