

## VR1/ TRPV1 antibody

Cat. No. GTX23487

Host	Rabbit
Clonality	Polyclonal
Isotype	IgG
Applications	WB, ICC/IF, IHC-Fr, IHC
Reactivity	Human

**Package**  
100 µg

## Applications

## Application Note

\*Optimal dilutions/concentrations should be determined by the researcher.

Suggested dilution	Recommended dilution
WB	Assay dependent
ICC/IF	1 µg/ml
IHC-Fr	1 µg/ml
IHC	Assay dependent

Not tested in other applications.

**Calculated MW** 95 kDa. ( [Note](#) )

## Properties

Form	Liquid
Buffer	PBS, 0.1% BSA
Preservative	0.05% Sodium azide
Storage	Store as concentrated solution. Centrifuge briefly prior to opening vial. For short-term storage (1-2 weeks), store at 4°C. For long-term storage, aliquot and store at -20°C or below. Avoid multiple freeze-thaw cycles.
Concentration	1 mg/ml (Please refer to the vial label for the specific concentration.)
Immunogen	Synthetic peptide corresponding to residues T(7) D L G A A D P L Q K D T C(21) of human VR1.
Purification	Purified by antigen-affinity chromatography
Conjugation	Unconjugated

## Note

For laboratory research use only. Not for any clinical, therapeutic, or diagnostic use in humans or animals. Not for animal or human consumption.

Purchasers shall not, and agree not to enable third parties to, analyze, copy, reverse engineer or otherwise attempt to determine the structure or sequence of the product.



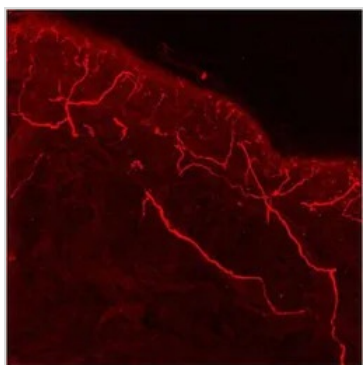
For full product information, images and publications, please visit our [website](#).

## DATA IMAGES



### GTX23487 IHC-Fr Image

IHC-Fr analysis of human glabrous skin tissue using GTX23487 VR1/ TRPV1 antibody.



### GTX23487 IHC-Fr Image

IHC-Fr analysis of human skin tissue sections using GTX23487 VR1/ TRPV1 antibody.

Fixation : paraformaldehyde

Dilution : 1:250



For full product information, images and publications, please visit our [website](#).