

Calpastatin antibody [2G11D6]

Cat. No. GTX23515

Host	Mouse
Clonality	Monoclonal
Isotype	IgG2a
Applications	WB, ICC/IF, IHC-P, IHC-Fr, IHC
Reactivity	Human, Rat, Rabbit, Bovine, Dog, Pig, Fish

Package
100 µl

Applications

Application Note

*Optimal dilutions/concentrations should be determined by the researcher.

Suggested dilution	Recommended dilution
WB	1:5,000
ICC/IF	1:1,000
IHC-P	Assay dependent
IHC-Fr	1:200-1000
IHC	Assay dependent

Not tested in other applications.

Product Note

This antibody does not cross-react with calpains or calmodulin and it recognizes an epitope found between amino acid residues 295-501 (domain II) of human calpastatin.

Properties

Form	Liquid
Buffer	Ascites diluted with PBS
Preservative	0.05% Sodium azide
Storage	Store as concentrated solution. Centrifuge briefly prior to opening vial. For short-term storage (1-2 weeks), store at 4°C. For long-term storage, aliquot and store at -20°C or below. Avoid multiple freeze-thaw cycles.
Immunogen	Bovine skeletal muscle calpastatin.
Purification	Unpurified
Conjugation	Unconjugated

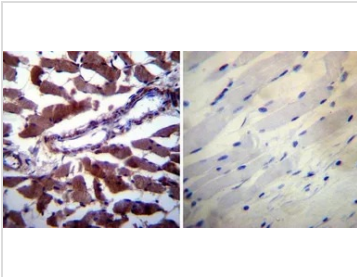


For full product information, images and publications, please visit our [website](#).

For laboratory research use only. Not for any clinical, therapeutic, or diagnostic use in humans or animals. Not for animal or human consumption.

Note

Purchasers shall not, and agree not to enable third parties to, analyze, copy, reverse engineer or otherwise attempt to determine the structure or sequence of the product.

DATA IMAGES

GTx23515 IHC-P Image

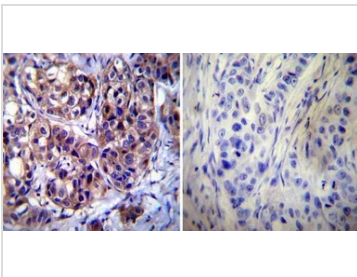
IHC-P analysis of human skeletal muscle tissue using GTx23515 Calpastatin antibody [2G11D6].

Left : Primary antibody

Right : Negative control without primary antibody

Antigen retrieval : heat induced antigen retrieval was performed using 10mM sodium citrate (pH6.0) buffer, microwaved for 8-15 minutes

Dilution : 1:200


GTx23515 IHC-P Image

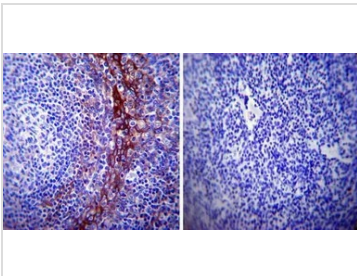
IHC-P analysis of human breast carcinoma tissue using GTx23515 Calpastatin antibody [2G11D6].

Left : Primary antibody

Right : Negative control without primary antibody

Antigen retrieval : heat induced antigen retrieval was performed using 10mM sodium citrate (pH6.0) buffer, microwaved for 8-15 minutes

Dilution : 1:1000


GTx23515 IHC-P Image

IHC-P analysis of human tonsil tissue using GTx23515 Calpastatin antibody [2G11D6].

Left : Primary antibody

Right : Negative control without primary antibody

Antigen retrieval : heat induced antigen retrieval was performed using 10mM sodium citrate (pH6.0) buffer, microwaved for 8-15 minutes

Dilution : 1:500



For full product information, images and publications, please visit our [website](https://www.genetex.com).