

## Calsequestrin antibody

**Cat. No. GTX23516**

<b>Host</b>	Rabbit
<b>Clonality</b>	Polyclonal
<b>Isotype</b>	IgG
<b>Applications</b>	WB, ICC/IF, IHC-P, IP, IHC
<b>Reactivity</b>	Human, Mouse, Rat, Rabbit, Sheep, Dog

**Package**  
100 µl

## Applications

**Application Note**

\*Optimal dilutions/concentrations should be determined by the researcher.

Suggested dilution	Recommended dilution
WB	1:1000-1:10,000
ICC/IF	Assay dependent
IHC-P	1:100-1:500
IP	Assay dependent
IHC	Assay dependent

Not tested in other applications.

**Product Note** This antibody recognizes both cardiac and skeletal muscle calsequestrin.

## Properties

<b>Form</b>	Liquid
<b>Buffer</b>	Serum diluted with PBS
<b>Preservative</b>	0.05% Sodium azide
<b>Storage</b>	Store as concentrated solution. Centrifuge briefly prior to opening vial. For short-term storage (1-2 weeks), store at 4°C. For long-term storage, aliquot and store at -20°C or below. Avoid multiple freeze-thaw cycles.
<b>Immunogen</b>	Purified canine cardiac calsequestrin.
<b>Purification</b>	Unpurified
<b>Conjugation</b>	Unconjugated

**Note**

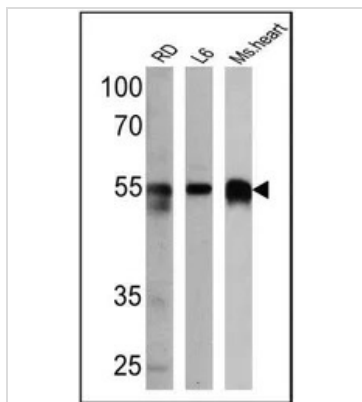
For laboratory research use only. Not for any clinical, therapeutic, or diagnostic use in humans or animals. Not for animal or human consumption.

Purchasers shall not, and agree not to enable third parties to, analyze, copy, reverse engineer or otherwise attempt to determine the structure or sequence of the product.



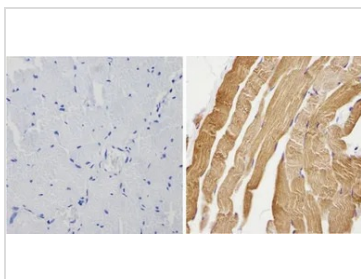
For full product information, images and publications, please visit our [website](#).

## DATA IMAGES

**GTX23516 WB Image**

WB analysis of 25 ug of RD (Lane 1), L6 (Lane 2) and mouse heart (Lane 3) cell lysates using GTX23516 Calsequestrin antibody.

Dilution : 1:5000

**GTX23516 IHC-P Image**

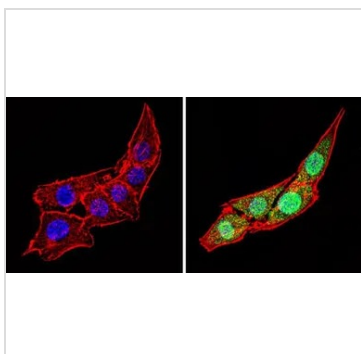
IHC-P analysis of human skeletal muscle using GTX23516 Calsequestrin antibody.

Right : Primary antibody

Left : Negative control without primary antibody

Antigen retrieval : 10mM sodium citrate (pH 6.0) microwaved for 8-15 min

Dilution : 1:200

**GTX23516 ICC/IF Image**

ICC/IF analysis of C2C12 cells using GTX23516 Calsequestrin antibody. Cells were probed without (left) or with(right) an antibody.

Green : Primary antibody

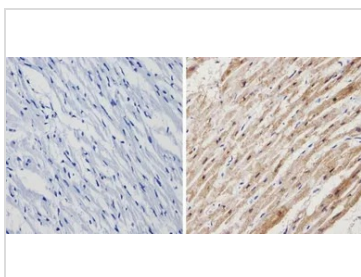
Blue : Nuclei

Red : Actin

Fixation : Formalin

Permeabilization : 0.1% Triton X-100 in TBS for 5-10 minute

Dilution : 1:100 incubated overnight at 4 °C

**GTX23516 IHC-P Image**

IHC-P analysis of human heart tissue using GTX23516 Calsequestrin antibody.

Right : Primary antibody

Left : Negative control without primary antibody

Antigen retrieval : 10mM sodium citrate (pH 6.0) microwaved for 8-15 min

Dilution : 1:200



For full product information, images and publications, please visit our [website](#).