

## PMCA2 ATPase antibody

**Cat. No. GTX23529**

|                     |                                      |
|---------------------|--------------------------------------|
| <b>Host</b>         | Rabbit                               |
| <b>Clonality</b>    | Polyclonal                           |
| <b>Isotype</b>      | IgG                                  |
| <b>Applications</b> | WB, ICC/IF, IHC-P, IHC-Fr, IP, ELISA |
| <b>Reactivity</b>   | Human, Mouse, Rat, Chicken, Pig      |

**Package**  
100 µg

## Applications

**Application Note**

\*Optimal dilutions/concentrations should be determined by the researcher.

| Suggested dilution | Recommended dilution |
|--------------------|----------------------|
|--------------------|----------------------|

|        |                 |
|--------|-----------------|
| WB     | 1:1,000         |
| ICC/IF | Assay dependent |
| IHC-P  | 1:20-1:200      |
| IHC-Fr | 1:20-1:200      |
| IP     | Assay dependent |
| ELISA  | Assay dependent |

Not tested in other applications.

**Calculated MW** 137 kDa. ([Note](#))

**Product Note** This antibody detects an ~127 kDa protein and an ~133 kDa protein representing PMCA2a and PMCA2b ATPase, respectively, from rat brain microsomal fractions.

## Properties

|                      |  |
|----------------------|--|
| <b>Form</b>          | Liquid   |
| <b>Buffer</b>        | PBS, 0.1% BSA  |
| <b>Preservative</b>  | 0.05% Sodium azide   |
| <b>Storage</b>       | Store as concentrated solution. Centrifuge briefly prior to opening vial. For short-term storage (1-2 weeks), store at 4°C. For long-term storage, aliquot and store at -20°C or below. Avoid multiple freeze-thaw cycles. |
| <b>Concentration</b> | 1 mg/ml (Please refer to the vial label for the specific concentration.)   |
| <b>Immunogen</b>     | Synthetic Peptide: T(5) N S D F Y S K N Q R N E S S(19)  |
| <b>Purification</b>  | Purified by antigen-affinity chromatography  |



For full product information, images and publications, please visit our [website](#).

**Conjugation**

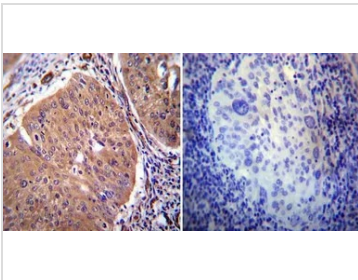
Unconjugated

**Note**

For laboratory research use only. Not for any clinical, therapeutic, or diagnostic use in humans or animals. Not for animal or human consumption.

Purchasers shall not, and agree not to enable third parties to, analyze, copy, reverse engineer or otherwise attempt to determine the structure or sequence of the product.

## DATA IMAGES

**GTX23529 IHC-P Image**

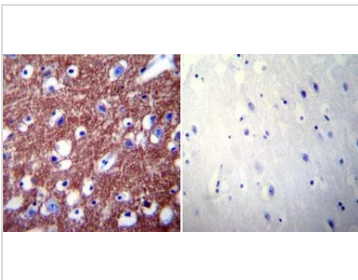
IHC-P analysis of human cervical carcinoma tissue using GTX23529 PMCA2 ATPase antibody.

Left : Primary antibody

Right : Negative control without primary antibody

Antigen retrieval : heat induced antigen retrieval was performed using 10mM sodium citrate (pH6.0) buffer, microwaved for 8-15 minutes

Dilution : 1:20

**GTX23529 IHC-P Image**

IHC-P analysis of human brain tissue using GTX23529 PMCA2 ATPase antibody.

Left : Primary antibody

Right : Negative control without primary antibody

Antigen retrieval : heat induced antigen retrieval was performed using 10mM sodium citrate (pH6.0) buffer, microwaved for 8-15 minutes

Dilution : 1:200



For full product information, images and publications, please visit our [website](#).