

# CaMKIV antibody

**Cat. No. GTX23557**

<b>Host</b>	Rabbit
<b>Clonality</b>	Polyclonal
<b>Isotype</b>	IgG
<b>Applications</b>	WB, ICC/IF, IHC-P
<b>Reactivity</b>	Human, Mouse, Rat, Dog, Xenopus, Plant, Primate

**Package**  
100 µg

## Applications

### Application Note

\*Optimal dilutions/concentrations should be determined by the researcher.

Suggested dilution	Recommended dilution
WB	0.5 - 1 µg/ml
ICC/IF	2 µg/ml
IHC-P	1:20-1:100

Not tested in other applications.

## Properties

<b>Form</b>	Liquid
<b>Buffer</b>	PBS, 0.1% BSA
<b>Preservative</b>	0.05% Sodium azide
<b>Storage</b>	Store as concentrated solution. Centrifuge briefly prior to opening vial. For short-term storage (1-2 weeks), store at 4°C. For long-term storage, aliquot and store at -20°C or below. Avoid multiple freeze-thaw cycles.
<b>Concentration</b>	1 mg/ml (Please refer to the vial label for the specific concentration.)
<b>Immunogen</b>	Synthetic Peptide: V(127) E K G Y Y S E R D A A D A V K Q(143) C
<b>Purification</b>	Purified by antigen-affinity chromatography
<b>Conjugation</b>	Unconjugated

### Note

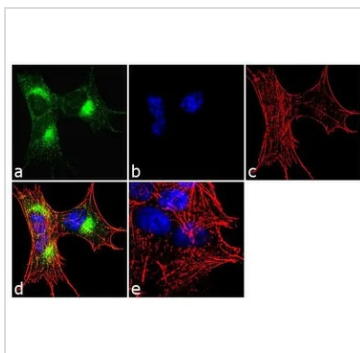
For laboratory research use only. Not for any clinical, therapeutic, or diagnostic use in humans or animals. Not for animal or human consumption.

Purchasers shall not, and agree not to enable third parties to, analyze, copy, reverse engineer or otherwise attempt to determine the structure or sequence of the product.



For full product information, images and publications, please visit our [website](#).

## DATA IMAGES



### GTx23557 ICC/IF Image

ICC/IF analysis of SH-SY5Y cells using GTx23557 CaMKIV antibody. Panel e is a no primary antibody control.

Green : Primary antibody

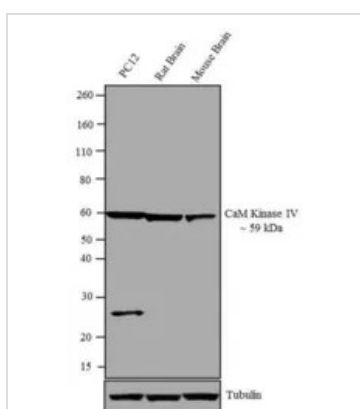
Blue : Nuclei

Red : Actin

Fixation : 4% paraformaldehyde

Permeabilization : 0.1% Triton X-100 for 10 minute

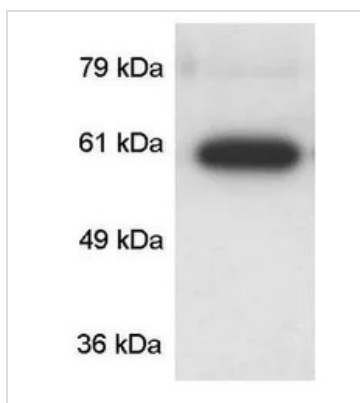
Dilution : 2 µg/ml in 0.1% BSA and incubated for 3 hours at room temperature



### GTx23557 WB Image

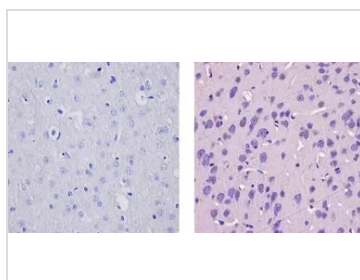
WB analysis of whole cell, tissue extracts (30 µg lysate) of PC12 (Lane 1), Rat Brain (Lane 2), and Mouse Brain (Lane 3) using GTx23557 CaMKIV antibody.

Dilution : 0.5-1 µg/ml



### GTx23557 WB Image

WB analysis of rat brain extract using GTx23557 CaMKIV antibody.



### GTx23557 IHC-P Image

IHC-P analysis of rat brain tissue using GTx23557 CaMKIV antibody.

Right : Primary antibody

Left : Negative control without primary antibody

Antigen retrieval : 10mM sodium citrate (pH 6.0), microwaved for 8-15 min

Dilution : 1:20



For full product information, images and publications, please visit our [website](https://www.genetex.com).