

Estrogen Receptor beta antibody

Cat. No. GTX23577

Host	Rabbit
Clonality	Polyclonal
Isotype	IgG
Applications	WB, ICC/IF, IHC-P, IHC-Fr, FCM, IP, ChIP assay, Gel supershift assays
Reactivity	Human, Mouse, Rat, Sheep, Bovine, Hamster, Pig, Primate

References (3)

Package

50 µg

Applications

Application Note

*Optimal dilutions/concentrations should be determined by the researcher.

Suggested dilution	Recommended dilution
WB	1-2 µg/ml
ICC/IF	0.5-4 µg/ml
IHC-P	1-2 µg/mL
IHC-Fr	1-2 µg/mL
FCM	Assay dependent
IP	Assay dependent
ChIP assay	Assay dependent
Gel supershift assays	1-5 µl

Not tested in other applications.

Calculated MW 59 kDa. ([Note](#))

Properties

Form	Liquid
Buffer	PBS, 0.1% BSA
Preservative	0.05% Sodium azide
Storage	Store as concentrated solution. Centrifuge briefly prior to opening vial. For short-term storage (1-2 weeks), store at 4°C. For long-term storage, aliquot and store at -20°C or below. Avoid multiple freeze-thaw cycles.
Concentration	1 mg/ml (Please refer to the vial label for the specific concentration.)
Immunogen	Synthetic peptide corresponding to residues A(55) E P Q K S P W C E A R S L E H(70) of rat ER beta.
Purification	Purified by antigen-affinity chromatography



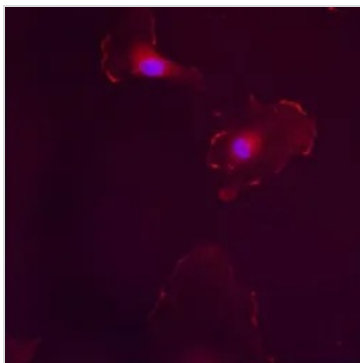
For full product information, images and publications, please visit our [website](#).

Conjugation Unconjugated

Note For laboratory research use only. Not for any clinical, therapeutic, or diagnostic use in humans or animals. Not for animal or human consumption.

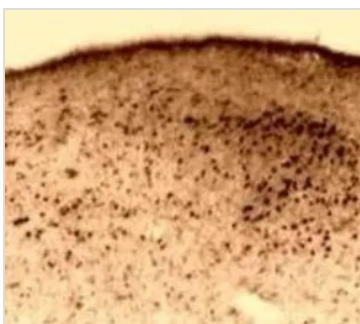
Purchasers shall not, and agree not to enable third parties to, analyze, copy, reverse engineer or otherwise attempt to determine the structure or sequence of the product.

DATA IMAGES



GTX23577 ICC/IF Image

ICC/IF analysis of cells using GTX23577 Estrogen Receptor beta antibody.



GTX23577 IHC-P Image

IHC-P analysis of primate amygdala tissue using GTX23577 Estrogen Receptor beta antibody.



For full product information, images and publications, please visit our [website](#).