

KCNMB1 antibody

Cat. No. GTX23587

Host	Rabbit
Clonality	Polyclonal
Isotype	IgG
Applications	WB, ICC/IF, IHC
Reactivity	Human, Mouse, Rat, Rabbit, Dog

Package
100 µg

Applications

Application Note

*Optimal dilutions/concentrations should be determined by the researcher.

Suggested dilution	Recommended dilution
WB	2.0 µg/ml
ICC/IF	1:100-1:200
IHC	Assay dependent

Not tested in other applications.

Calculated MW 22 kDa. ([Note](#))

Product Note This antibody detects large conductance, calcium-activated potassium channel beta (Maxi K+ Beta). The molecular weight detected varies due to glycosylation, multimerization and binding to actin.

Properties

Form	Liquid
Buffer	PBS, 0.1% BSA
Preservative	0.05% Sodium azide
Storage	Store as concentrated solution. Centrifuge briefly prior to opening vial. For short-term storage (1-2 weeks), store at 4°C. For long-term storage, aliquot and store at -20°C or below. Avoid multiple freeze-thaw cycles.
Concentration	1 mg/ml (Please refer to the vial label for the specific concentration.)
Immunogen	Synthetic Peptide: L(90) Y H T E D T R D Q N Q Q C(103)
Purification	Purified by antigen-affinity chromatography
Conjugation	Unconjugated

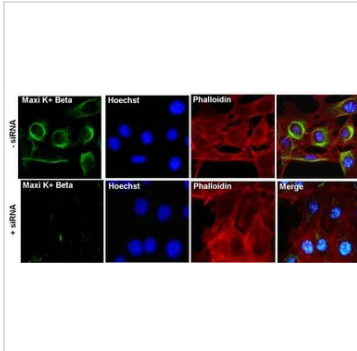


For full product information, images and publications, please visit our [website](#).

For laboratory research use only. Not for any clinical, therapeutic, or diagnostic use in humans or animals. Not for animal or human consumption.

Note

Purchasers shall not, and agree not to enable third parties to, analyze, copy, reverse engineer or otherwise attempt to determine the structure or sequence of the product.

DATA IMAGES

GTx23587 ICC/IF Image

ICC/IF analysis of MOVAS cells transfected with (+) and without (-) Maxi K+ Beta (KCNMB1) siRNA using GTx23587 KCNMB1 antibody.

Green : Primary antibody

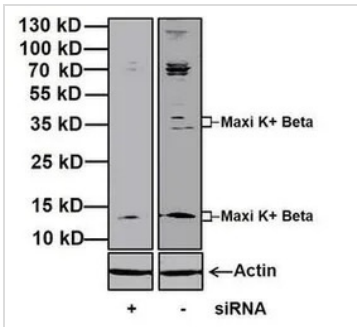
Blue : Nuclei

Red : Actin

Fixation : 4% paraformaldehyde

Permeabilization : 0.1% Triton X-100 in PBS for 10 minutes

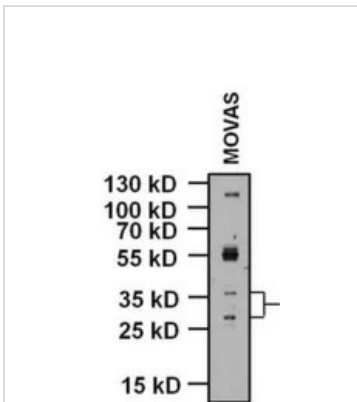
Dilution : 1:100 in staining buffer for 1 hour at room temperature


GTx23587 WB Image

WB analysis of MOVAS whole cell lysates with and without Maxi K+ Beta (KCNMB1) siRNA using GTx23587 KCNMB1 antibody.

Dilution : 1 µg/ml

Loading : 20 µg


GTx23587 WB Image

WB analysis of 20 ug of Movas whole cell lysates using GTx23587 KCNMB1 antibody.

Dilution : 1 µg/ml



For full product information, images and publications, please visit our [website](https://www.genetex.com).